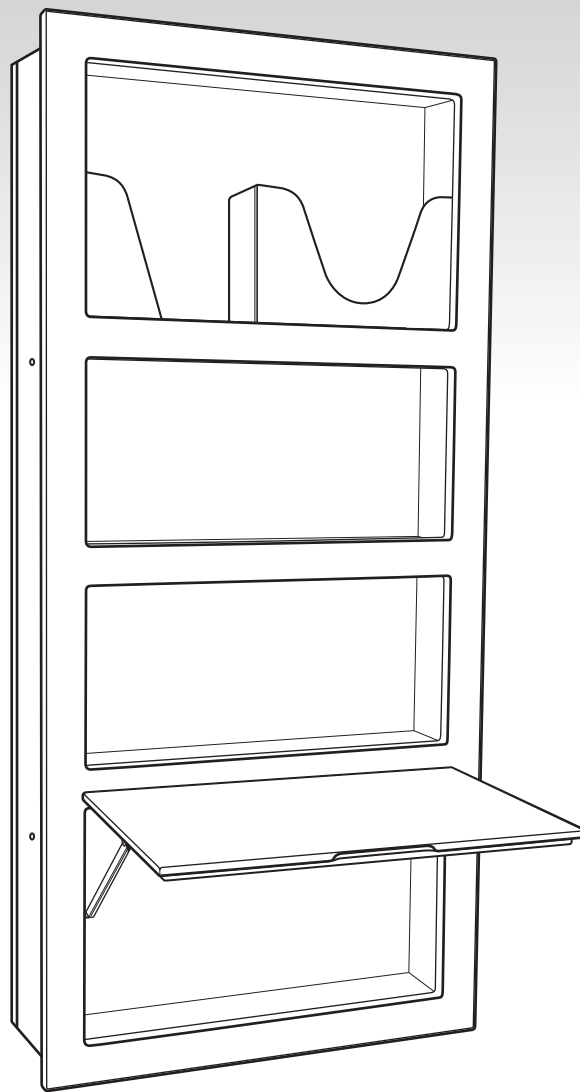




ergonomic products
Performance Without Compromise™

Specification and Installation Guide

24" INWALL™ STORAGE



Shown with optional Lift-Up Writing Surface,
Paper Towel Holder and Patient Chart Holder

Product ID: **N2B**
950-091 Manual version: **A**



Thank you for purchasing the Ergonomic Products 24" Inwall™ Storage Cabinet.

Years of research by dentists, engineers and designers have made this a uniquely effective product in the industry. We stand behind our equipment, and genuinely believe it to be the best available on the market.

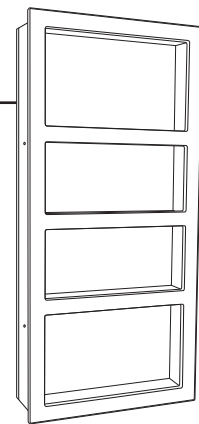
Should you have any questions regarding the product's installation or use, please don't hesitate to call our customer service specialists at **1-866-ERGO-4-US**. We may also be reached via email at **equip@ergonomic-products.com**.

We hope you enjoy the benefits and quality of your new equipment and look forward to handling your future needs as you and your practice continue to grow!

- The Ergonomic Products Team

CONTENTS:

1. Specifications and Site Planning	3
2. Required Tools / Unpacking and Inspecting	4
3. Installation	5
4. Maintenance	5
5. Service and Warranty Information	6



QUESTIONS?

Call our Customer Service Specialists at:
1-866-ERGO-4-US.



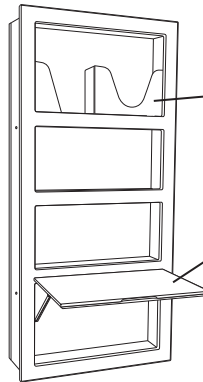
1 - SPECIFICATIONS and SITE PLANNING

USE & FEATURES

- Inwall storage cabinet
- Designed to hold standard dental glove and mask boxes

CONFIRM OPTIONS

This product is available with a variety of options, listed right. Please confirm the accuracy of product received, prior to installation.



AVAILABLE OPTIONS

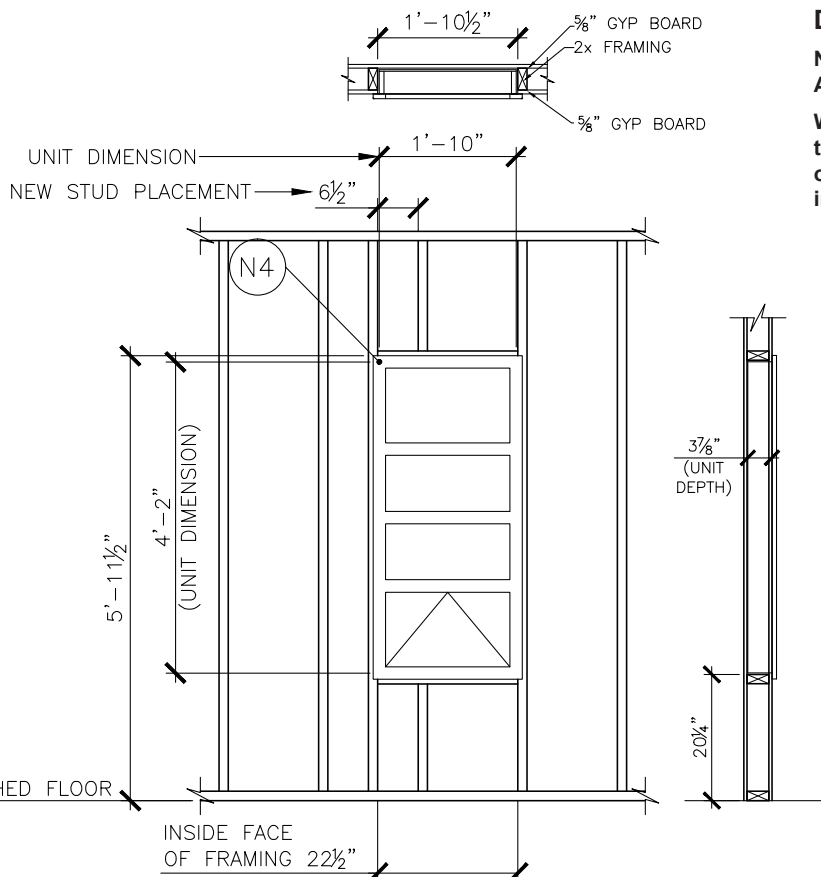
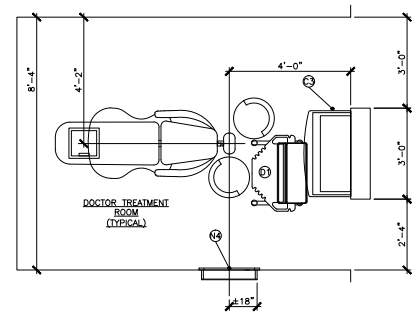
- Paper Towel Holder (shown)
- and/or - Patient Chart Holder (shown)
- Lift-up Writing Surface (shown)
- or - Med-waste Flip-Out

Note: Site planning and installation are identical for all currently available options and combinations.

IDEAL LOCATION CONFIGURATION

The primary location for 24" Inwall Storage units is in the operatory, on the right-hand side of the headwall. Placing the centerline of the unit directly in line with the head of the patient chair typically provides the assistant with the greatest access.

However, these units are very versatile and can be extremely useful in many areas of the practice, including multiple locations within a single operatory.



DIMENSIONS

NOTE: All Height Dimensions are referenced ABOVE the FINISHED FLOOR ("AFF").

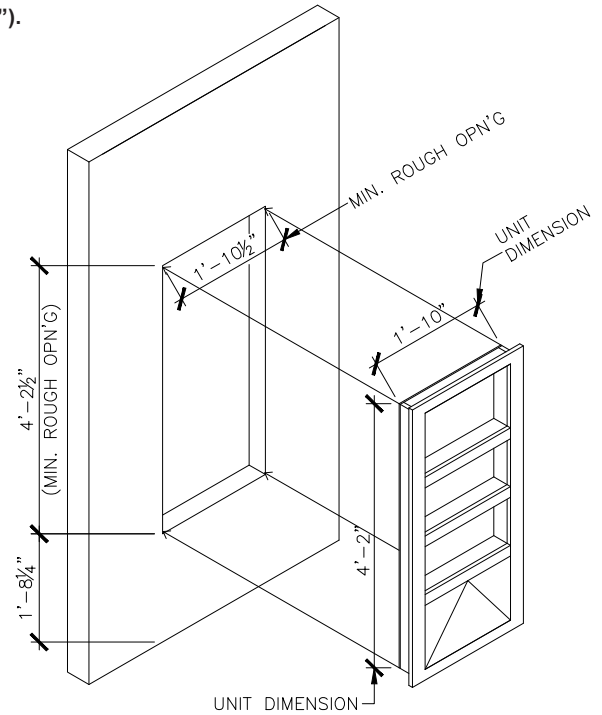
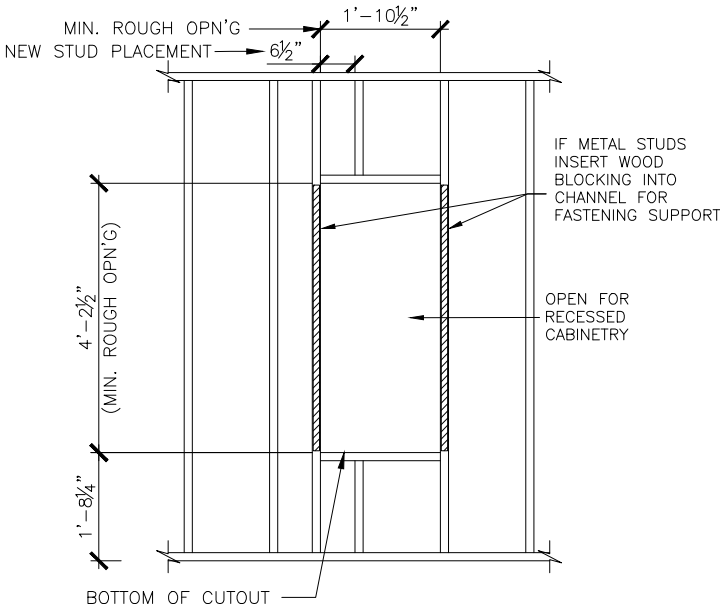
When planning the Rough Opening, it is critical to measure from the installed Finished Floor, or account for its eventual depth if it is not yet installed.



1 - SPECIFICATIONS and SITE PLANNING con't

ROUGH OPENING

NOTE: All Height Dimensions are referenced ABOVE the FINISHED FLOOR ("AFF").
When planning the Rough Opening, it is critical to measure from the installed Finished Floor, or account for its eventual depth if it is not yet installed.



2 - REQUIRED TOOLS / UNPACKING and INSPECTING

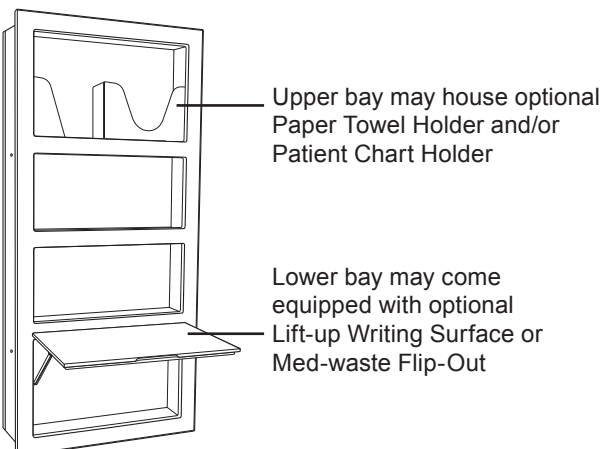
REQUIRED TOOLS

Phillips Head Screw Driver
Electric Drill
3/8" Drill Bit and Counter Sink
Level

1. Remove all packing material from box.
2. Use safe lifting procedures to carefully remove unit and place on clean surface near the installation site.

PARTS LIST

Check that the configuration/options for your product(s) are correct. If anything is damaged or missing, please contact Ergonomic Products customer service at 1-866-ERGO-4-US.



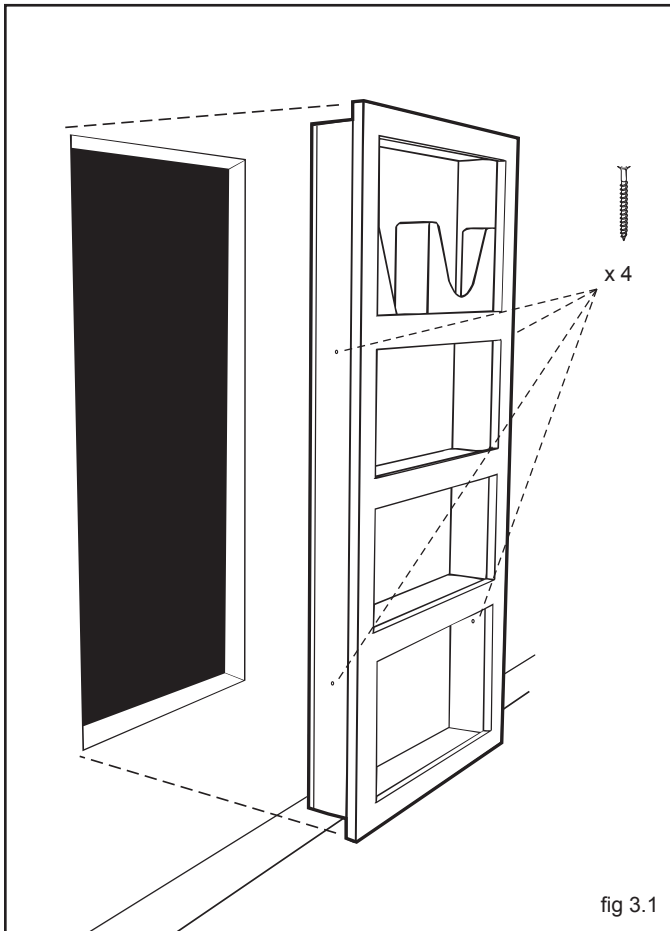
The 24" Inwall Storage Unit comes fully assembled, including any purchased options such as a lift up writing surface, med-waste flip out, or chart/paper-towel holders.

These options do not affect installation.

Suggested screw size for mounting the unit to the blocking is (4) #8 - 2 1/2" flat head screws.



3 - INSTALLATION



1. Before inserting unit, counter-sink the four pre-drilled mounting holes on cabinet sides.
2. Dry-fit unit in rough opening to confirm face is evenly flush against wall. If large gaps are present, mark area and cut down wall surface to remove high spots on wall board.
3. When surface has been adequately prepared, insert unit into rough opening for final installation.
4. While holding unit flush to wall, check that it is level. If it is not, slightly raise one side until unit is plumb.
5. While keeping unit flush against the wall, secure raised side to studs with two flat head screws*.
6. Secure other side with remaining two screws*.

* **Suggested screw size #8 - 2 1/2" flat head screws.**

4 - MAINTENANCE

Cleaning instructions

Painted Surfaces

Clean with mild detergent, damp cloth and dry thoroughly after cleaning.
Do NOT use alcohol or solvent based cleaners, ScotchBrite or other abrasive pads.



5 - WARRANTY INFORMATION

Extract from 950-029 rev D

A PROMISE FROM THE EMPLOYEES AT ERGONOMIC PRODUCTS, INC.

At Ergonomic Products, Inc., we understand that placing a dental equipment order, whether it be with a local distributor, one of the big names in the industry or a specialty firm like ours, can be difficult. We understand your fears in making such an investment.

Whether your order is large or small, we promise to treat every customer with the same level of complete honesty and courtesy. We know you won't get this kind of commitment everywhere you go.

We promise to give you answers to your technical questions as quickly as possible. Our technical people are working diligently every day to deliver the finest equipment. When a service need does occur, we will take full responsibility and do everything in our power to correct the problem.

We promise to always truthfully describe our products and the technology they provide you with. We are sure that our equipment is absolutely the best available. Period. We believe that it will tell it's own story. We will never sell you more than our equipment can deliver. Life is too short for that.

We promise to offer you a significant warranty on our products that we will unequivocally stand behind.

- 5-year limited warranty on all CORIAN® surfaces (Limited to manufacturer's defects only)
- 3-year warranty on all Rapid Carts® (Excludes powder coated Rapid Carts® tops; 1 year warranty)
- 5-year warranty on all EP 3 Series® Patient Chairs (Excludes upholstery; 1 year warranty)
- 3-year warranty on all Workstations®
- 3-year warranty on all EP Lighting (Excludes bulbs)
- 1-year warranty on all cabinets, laminates & components
- 1-year warranty on all storage tubs and bins
- 3rd party components carry the original manufacturer's warranty:
 - 1-year warranty on scalers
 - 1-year warranty on cure lights
 - 1-year warranty on Ultraleather upholstery
 - 1-year warranty on BienAir Electric Motors

Discontinued parts or components cannot be serviced once the warranty has expired. Additional 3rd party sources may be available.

We promise to offer you prompt, inexpensive repairs. Products under warranty will, be fixed as quickly as possible and service will be done on site if feasible. If it must be returned to our technical center, it will be returned to you without additional shipping charges. If the time needed to repair it will affect your practice schedule, we will try to provide a loaner so as to not interrupt your service to your patients. In an emergency, our Doctor Delivery Power Channels® will ship overnight.

Should your office damage equipment, due to improper use or inadequate installation or maintenance, we'll still make sure to fix your problem, promptly and without complaint. The warranty will not apply, nor is there a warranty for fabric damaged by infection control products.

We promise to continuously satisfy you with our products and services. We want to hear from you and help you improve your practice.

Sincerely,

The Staff at Ergonomic Products, Inc.