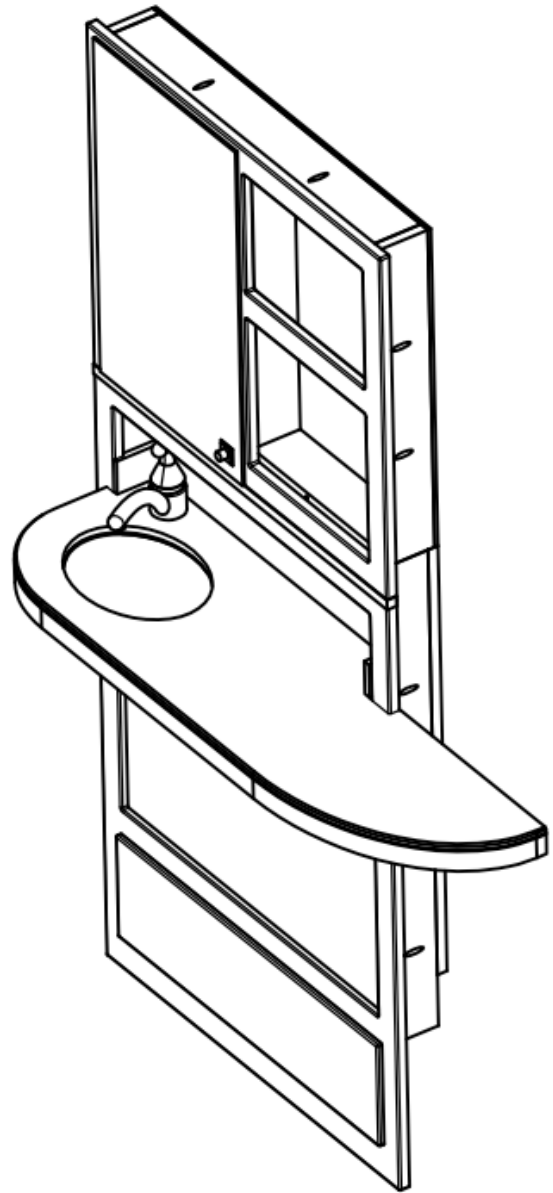
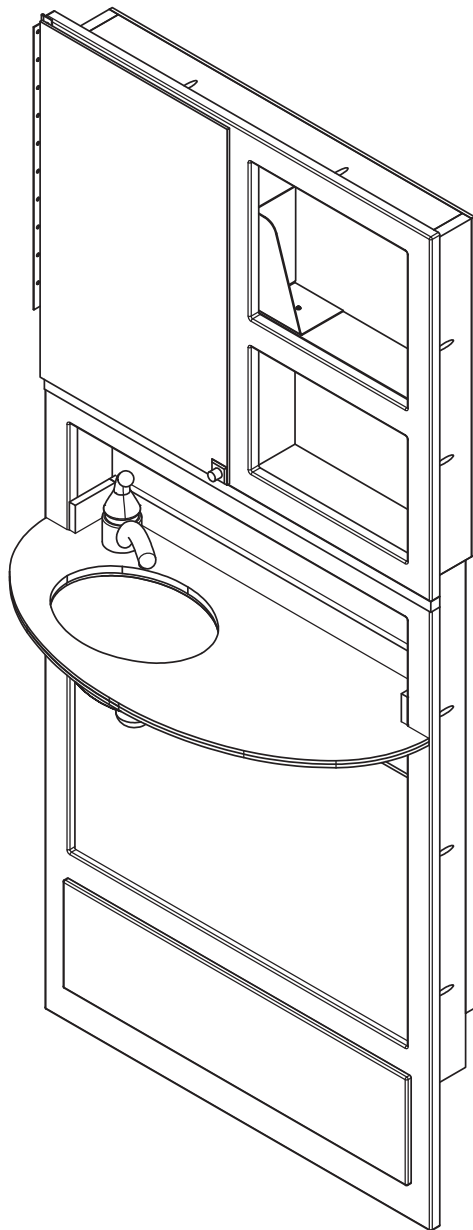




ergonomic products
Performance Without Compromise™

Specification and Installation Guide

N3A Series: 32" Inwall Comfort Station



STANDARD AND EXTENDED COUNTER SURFACE SHOWN.

Product ID: **N3A**
950-093 Manual version: **B**



Thank you for purchasing the Ergonomic Products N3A Series 32" InWall Comfort Station.

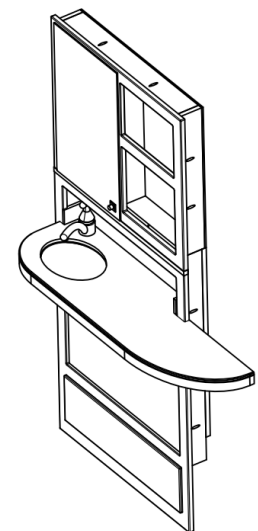
Years of research by dentists, engineers and designers have made this a uniquely effective product in the industry. We stand behind our equipment, and genuinely believe it to be the best available on the market.

Should you have any questions regarding the product's installation or use, please don't hesitate to call our customer service specialists at **1-866-ERGO-4-US**. We may also be reached via email at **equip@ergonomic-products.com**.

We hope you enjoy the benefits and quality of your new equipment and look forward to handling your future needs as you and your practice continue to grow!

CONTENTS:

1. Specifications	3
2. Required Tools / Unpacking and Installation.....	5
3. Installation	6
4. Maintenance.....	7
5. Warrenty Information	8



QUESTIONS?

**Call our Customer Service Specialists at:
1-866-ERGO-4-US.**



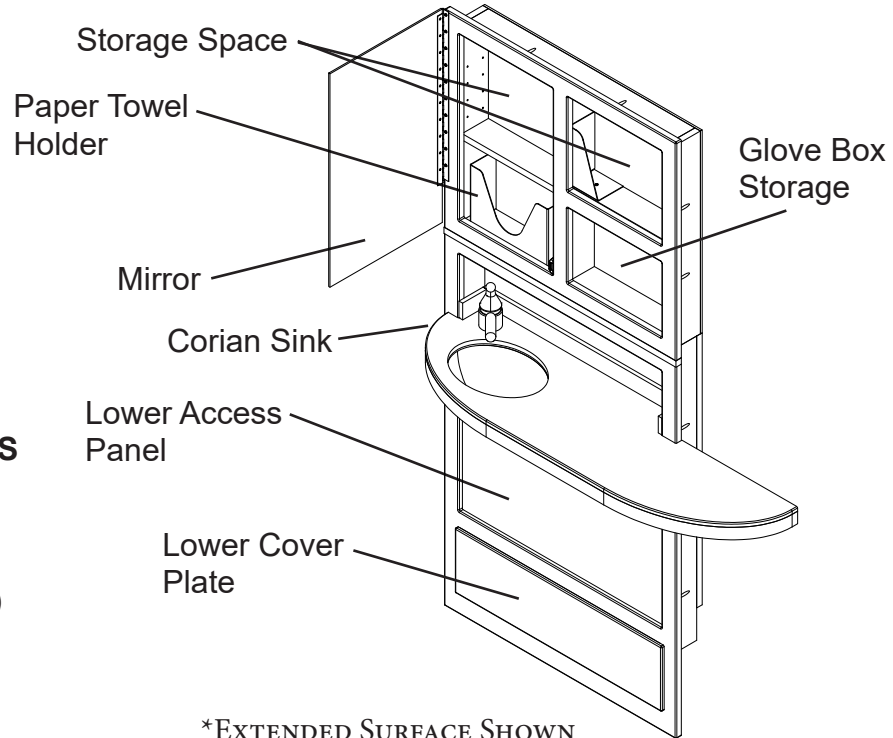
1 - SPECIFICATIONS

STANDARD FEATURES

- Corian counter-top
- Additional product storage behind mirror
- Open glove and bib storage
- Chrome faucet
- Brushed stainless sink
- Utility access panel

OPTIONAL FEATURES / CONFIGURATIONS

- Available with sink oriented to the left or right (or without sink)
- Extended counter available (either orientation)



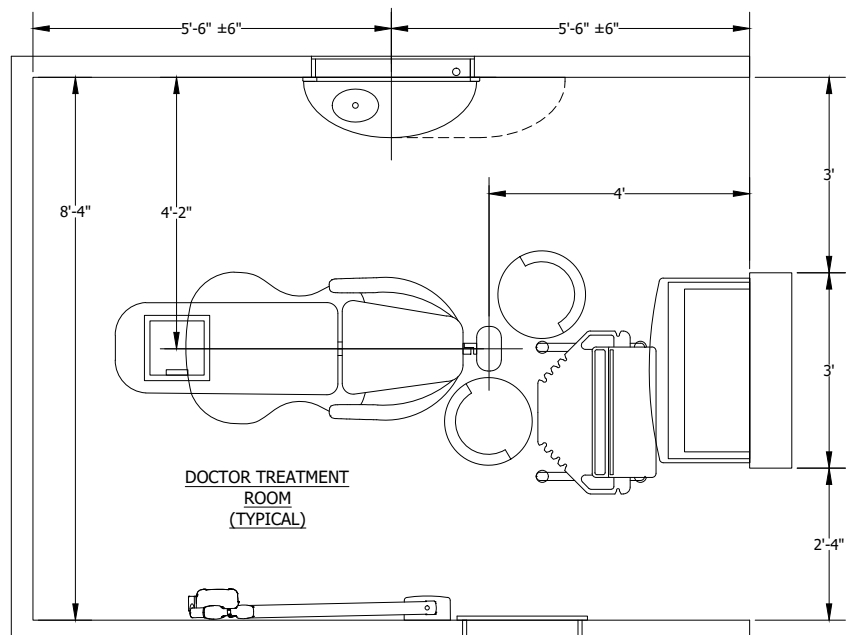
*EXTENDED SURFACE SHOWN

IDEAL LOCATION CONFIGURATION

For Right Handed Doctor rooms, the 32" InWall Comfort is best used with a left-oriented sink, placed on centerline of the operatory, though some lee-way is fine. If the unit needs to be shifted, most doctor's will place the unit closer to the toe, rather than head.

The centerline of the cabinet remains the same, if purchased with the extended shelf.

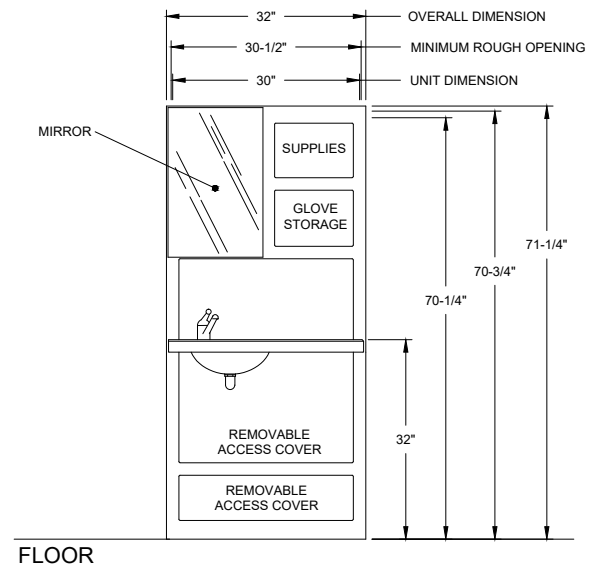
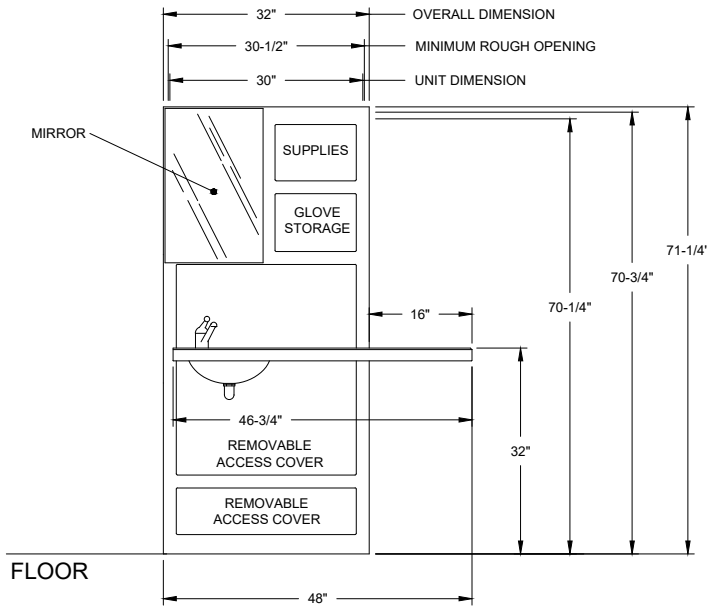
For alternate room layouts or equipment configurations, position unit so that right side of cabinet lines up with head of chair when reclined.





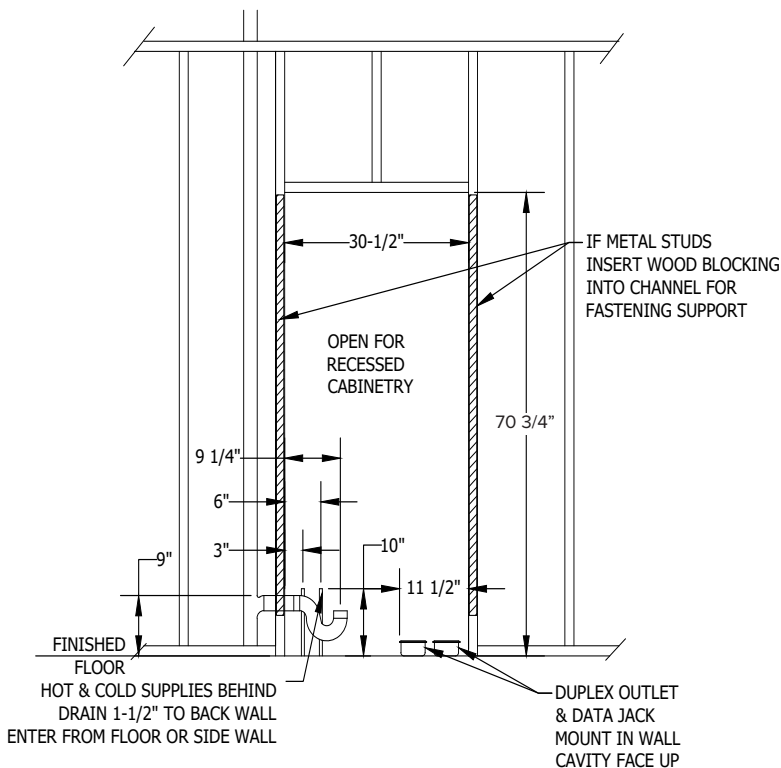
1 - SPECIFICATIONS CONT'D

Product Dimensions



Note: Left sink shown, other configurations are available.

Site Planning



PLUMBING SPECIFICATIONS

Unit is supplied with Delta 570 Single Lever Faucet and 1-1/4" 90 degree Tail-piece.

Plumber To Provide:

- 1/2" Hot and Cold domestic supply lines with straight 1/4 turn-stop and 3/8" compression
- 1-1/2" DWV with P-Trap as shown

Note: All height dimensions are referenced ABOVE the FINISHED FLOOR ("AFF").

When planning the rough opening, it is critical to measure from the installed Finished Floor, or account for its eventual depth if it is not yet installed.



2 - REQUIRED TOOLS / UNPACKING and INSPECTING

REQUIRED TOOLS

Phillips Head Screw Driver
Electric Drill
3/8" Drill Bit and Counter Sink
Level

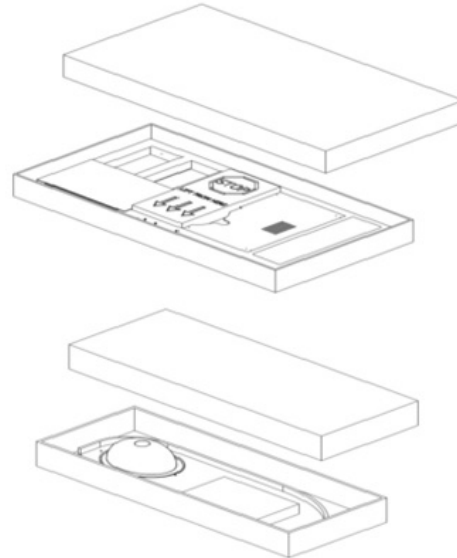
1. Inspect all shipping containers for visible damage upon arrival. If transit damage is found photograph damage, and contact Ergonomic Products immediately. (This will expedite the corrective process).

2. Use safe lifting procedures to free the product from the container, and remove all packing material and any accessory boxes from shipping container.

3. Lay individual components on clean surface to avoid scratching, and inspect contents. If damage is found, contact Ergonomic Products immediately.

4. Do not discard accessory boxes without thoroughly confirming they are empty first.

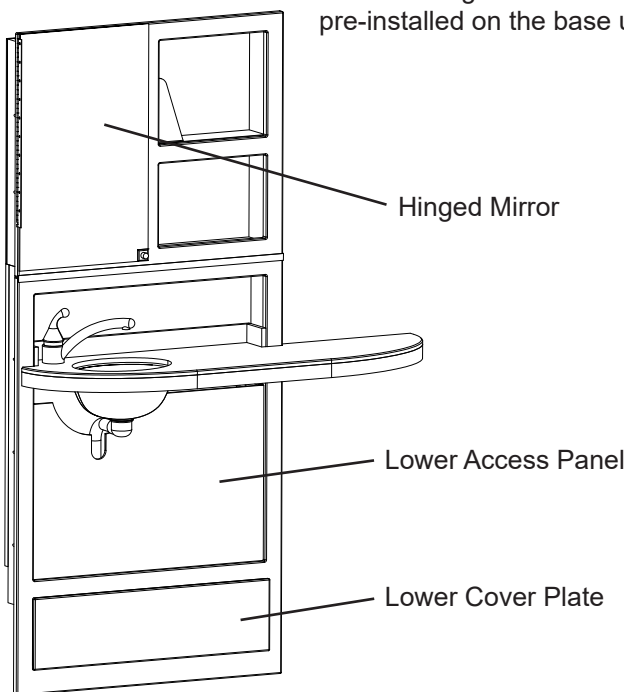
All claims against the freight carrier must be initiated at the time the damaged items are received. The claim is the responsibility of the customer.



PARTS LIST

Check that the configuration/options for your product(s) are correct. If anything is damaged or missing, please contact Ergonomic Products customer service at 1-866-ERGO-4-US.

The following items come pre-installed on the base unit



Additional items:

(1) 1-1/4" 90° Sink Tail-piece
(not included if unit is purchased without sink)



(1) Extended Counter Backsplash
(2) Side Backsplash
(1) Rear Backsplash
(1) 12" x 1" wooden Counter Support Cleat
(1) 2.8 oz tube of Silicone Adhesive

(2) Support "L" Brackets



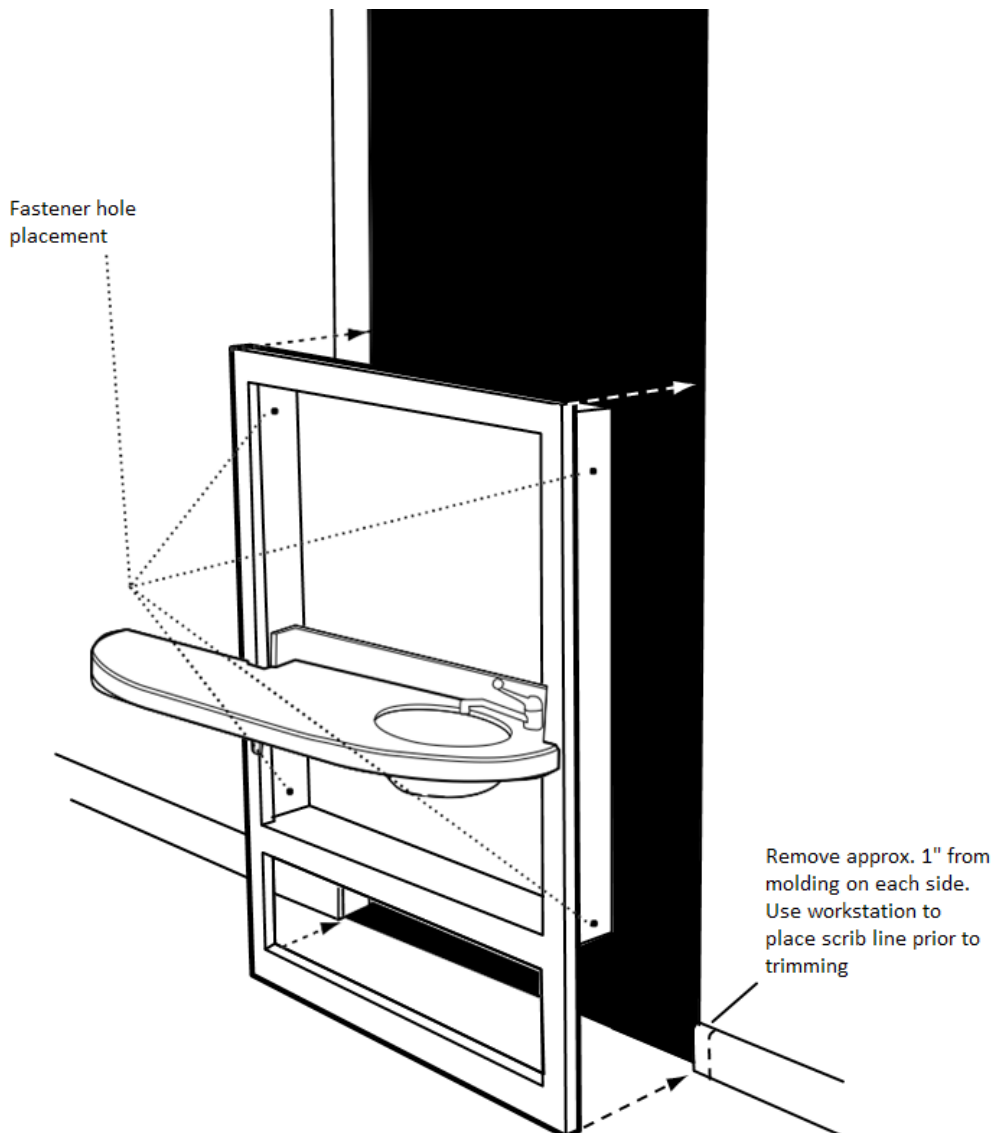


3 - INSTALLATION

Position lower assembly so that bottom of face frame sits on the floor. If the floor is not level or opening is not plumb, some shimming may be required.

1. Place lower assembly into cavity, make scribe lines for removal of base board molding around cavity to compensate for lower assembly.
2. Insert Lower assembly into opening.
3. Finish fastening lower assembly by fastening four (4) screws* using pre-drilled holes.

****Suggested screw size #8 2-1/2 flat head screw***

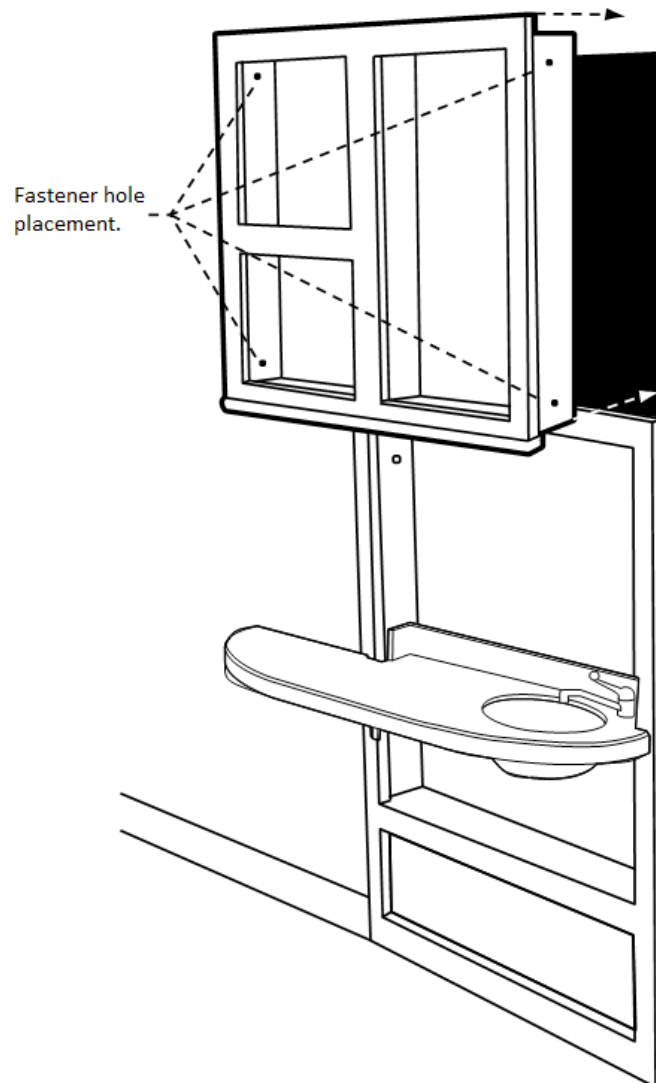




3 - INSTALLATION

1. Install Upper Assembly, making sure it sits fully on lower section and tight against wall.
2. Secure same as Lower Assembly with (4) flat-head screws* using pre-drilled holes.

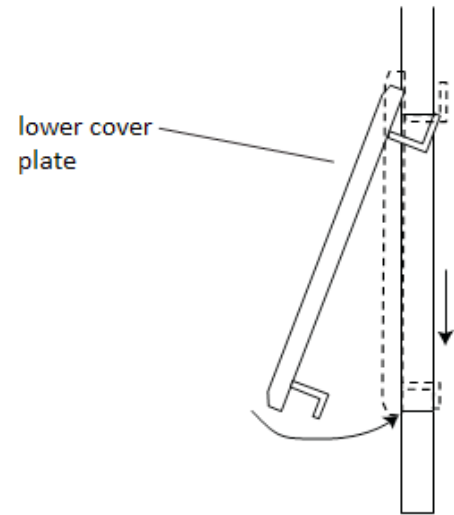
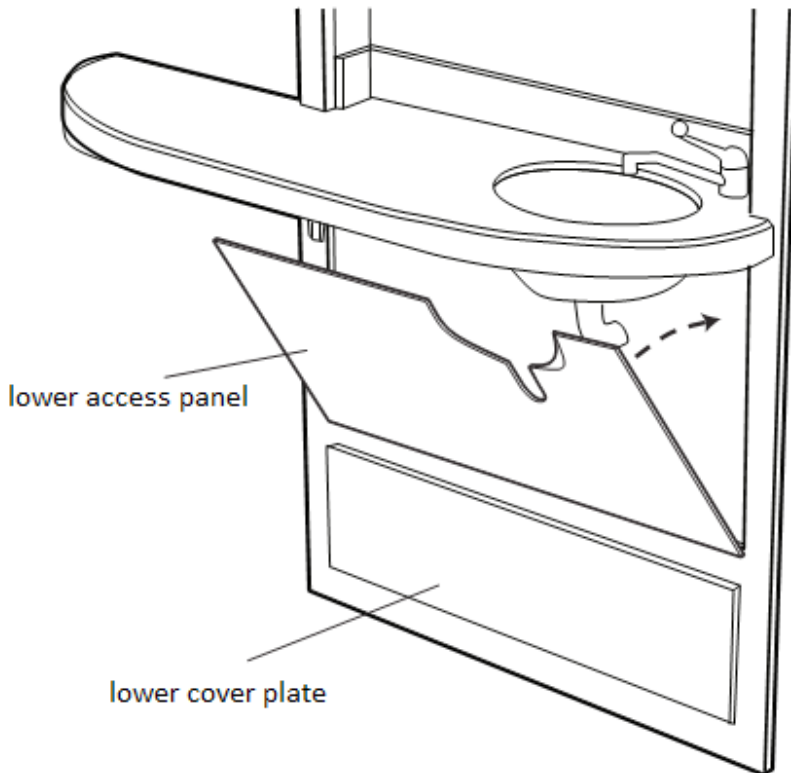
****Suggested screw size #8 2-1/2 flat head screw***





3 - INSTALLATION

1. To install the Lower Access Panel on all 32" Inwalls: Insert the bottom edge of the Lower Access Panel (fig. 17) first and rotate upper edge of the Lower Access Panel into position, Reverse this process for the removal of the Lower Access Panel.
2. To install the lower cover plate on all 32" Inwalls; Insert top of lower cover plate, lift and rotate into position and release. (See fig. 18)





4 - MAINTENANCE

Cleaning instructions

Painted and Anodized Aluminum Surfaces

Clean with mild detergent, damp cloth and dry thoroughly after cleaning.

Do NOT use alcohol or solvent based cleaners, ScotchBrite or other abrasive pads.

CORIAN® Surfaces

Clean with warm, soapy water or any non-abrasive ammonia based cleaner or disinfectant. Dry thoroughly after cleaning. For tougher stains, use Clean EnCounters® from DuPont.

Do NOT use window-cleaning solutions (they will leave a waxy build-up), ScotchBrite or other abrasive pads.

For more information on cleaning CORIAN surfaces, go to:

<http://www.dupont.com/products-and-services/construction-materials/surface-design-materials/brands/corian-solid-surfaces/articles/how-to-clean-corian.html>



5 - WARRANTY INFORMATION

Ergonomic Products offers the following warranty on our products:

- 5-year limited warranty on all Corian® surfaces*
- 3-year warranty on all RapidCarts®**
- 5-year warranty on all EP 3 Series® Patient Chairs***
- 3-year warranty on all Workstations®
- 3-year warranty on all EP Lighting****
- 3-year warranty on STS Manifold and Sliding Track Assembly
- 1-year warranty on all cabinetry, laminates and components
- 1-year warranty on all storage tubs and bins
- 3rd party components carry the original manufacturer's warranty:
 - 1-year warranty on scalers
 - 1-year warranty on cure lights
 - 1-year warranty on Ultraleather upholstery
 - 1-year warranty on BienAir Electric Motors
 - 1-year warranty on STS Articulating Arm and Motor

* Limited to manufacturer's defects only

** Excludes powder-coated RapidCarts® tops (1 year warranty)

*** Excludes upholstery (1 year warranty)

**** Excludes bulbs

Discontinued parts or components cannot be serviced once the warranty has expired. Additional 3rd-party sources may be available.

We promise to offer you prompt, inexpensive repairs. Products under warranty will be fixed as quickly as possible and service will be done on-site if possible. If a product must be returned to our technical center, it will be returned to you without additional shipping charges. If the time needed to repair it will affect your practice schedule, we will try to provide a loaner so as to not interrupt your service to your patients. In an emergency, our Doctor Delivery Power Channels® will ship overnight.

Should your office damage equipment, due to improper use or inadequate installation or maintenance, we'll still make sure to fix your problem promptly. The warranty will not apply. There is no warranty for fabric damaged by infection control products.

We promise to keep working to inspire you with our products and services. We want to hear from you and help you to continue to improve your practice.

Sincerely,
The Staff at Ergonomic Products, Inc.