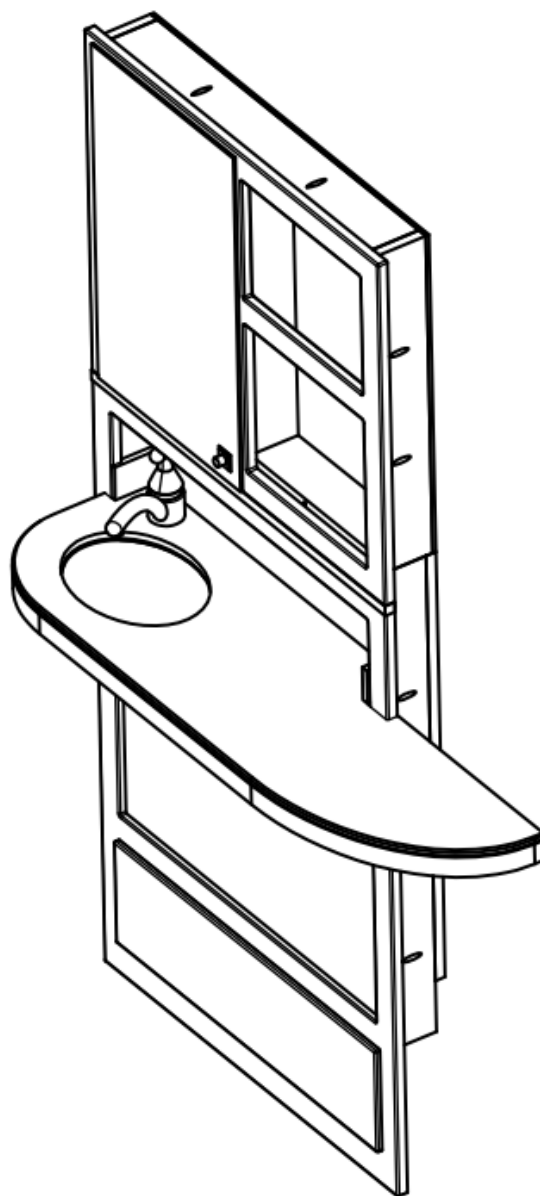
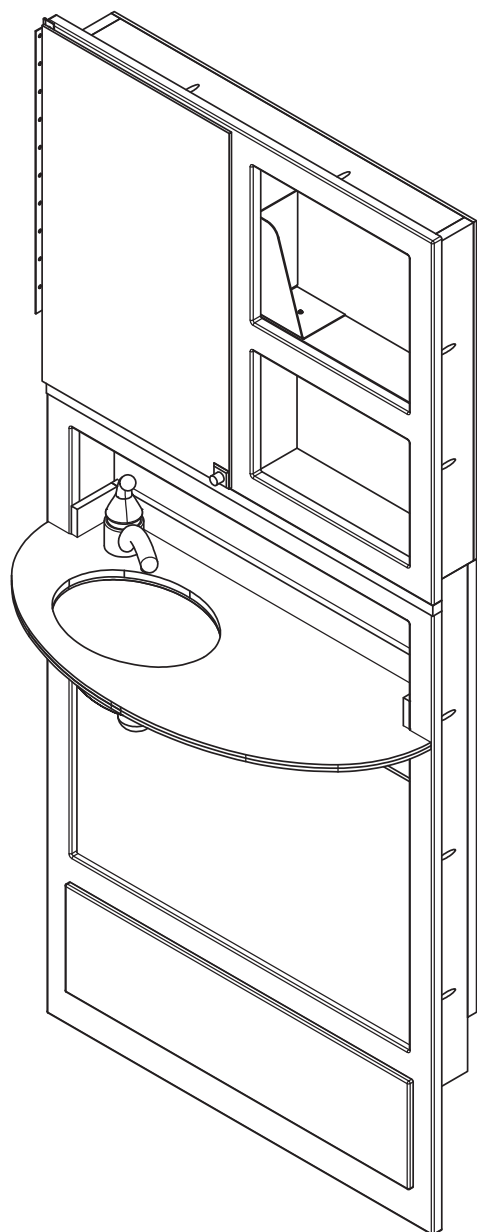




ergonomic products
Performance Without Compromise™

Specification and Installation Guide

N3A Series: 32" Inwall Comfort Station



STANDARD AND EXTENDED COUNTER SURFACE SHOWN.

Product ID: **N3A**
950-093 Manual version: **B**



Thank you for purchasing the Ergonomic Products N3A Series 32" InWall Comfort Station.

Years of research by dentists, engineers and designers have made this a uniquely effective product in the industry. We stand behind our equipment, and genuinely believe it to be the best available on the market.

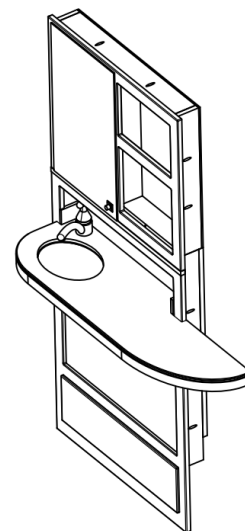
Should you have any questions regarding the product's installation or use, please don't hesitate to call our customer service specialists at **1-866-ERGO-4-US**. We may also be reached via email at **equip@ergonomic-products.com**.

We hope you enjoy the benefits and quality of your new equipment and look forward to handling your future needs as you and your practice continue to grow!

- The Ergonomic Products Team

CONTENTS:

1. Specifications	3
2. Required Tools / Unpacking and Installation.....	5
3. Installation	6
4. Maintenance.....	7



QUESTIONS?

Call our Customer Service Specialists at:
1-866-ERGO-4-US.



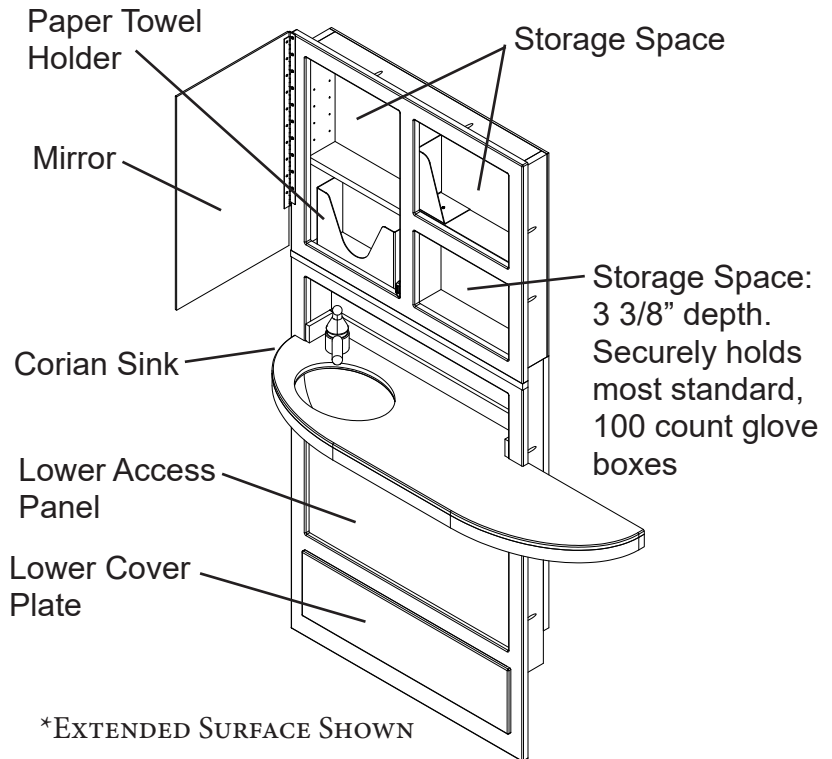
1 - SPECIFICATIONS

STANDARD FEATURES

- Corian counter-top
- Additional product storage behind mirror
- Open glove and bib storage
- Chrome faucet
- Brushed stainless sink
- Utility access panel

OPTIONAL FEATURES / CONFIGURATIONS

- Available with sink oriented to the left or right (or without sink)
- Extended counter available (either orientation)

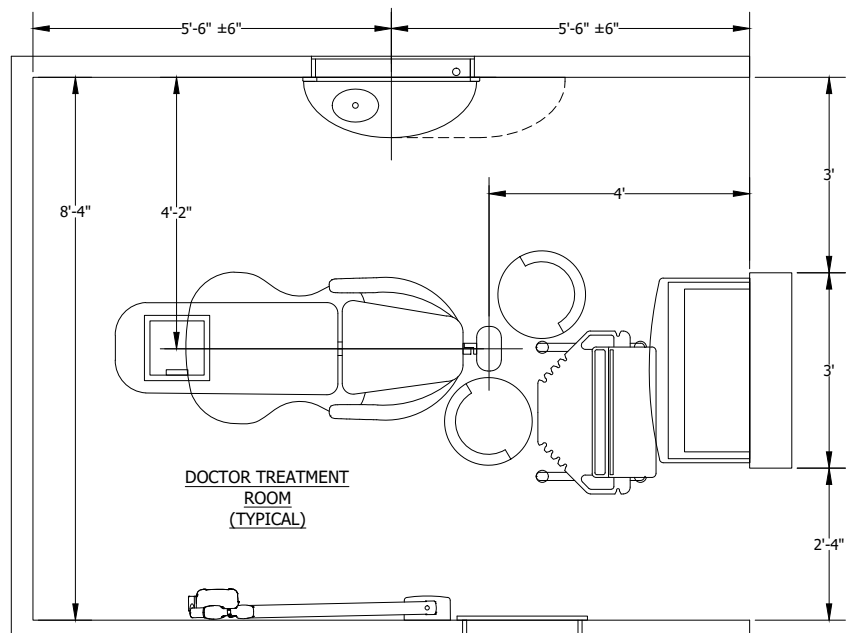


IDEAL LOCATION CONFIGURATION

For Right Handed Doctor rooms, the 32" InWall Comfort is best used with a left-oriented sink, placed on centerline of the operatory, though some lee-way is fine. If the unit needs to be shifted, most doctor's will place the unit closer to the toe, rather than head.

The centerline of the cabinet remains the same, if purchased with the extended shelf.

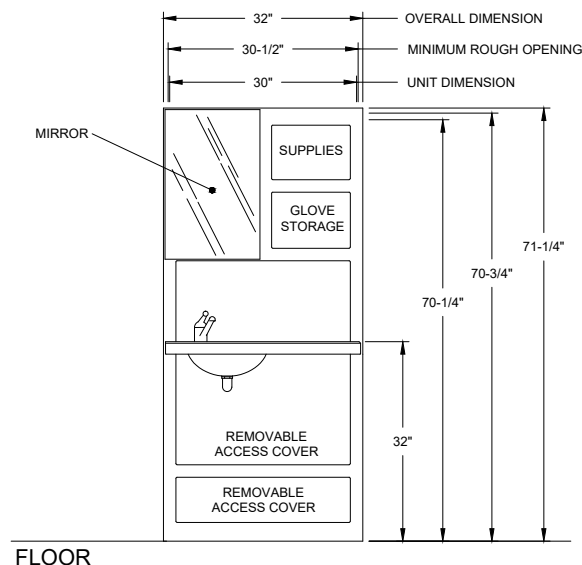
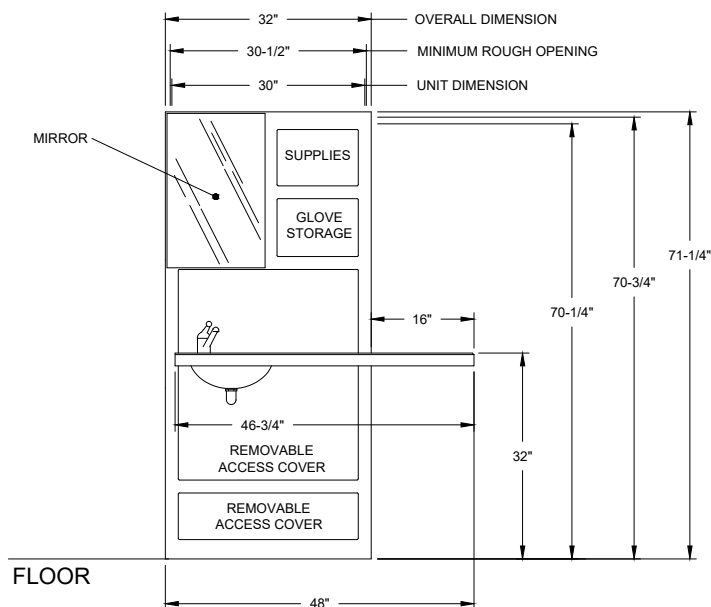
For alternate room layouts or equipment configurations, position unit so that right side of cabinet lines up with head of chair when reclined.





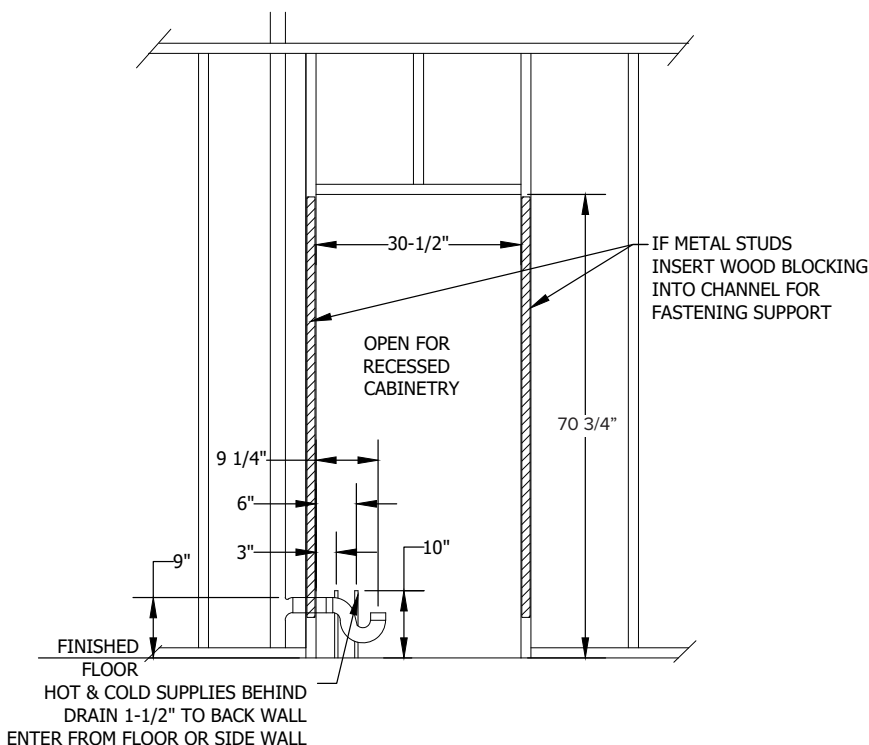
1 - SPECIFICATIONS CONT'D

Product Dimensions



Note: Left sink shown, other configurations are available.

Site Planning



PLUMBING SPECIFICATIONS

Unit is supplied with Delta 570 Single Lever Faucet and 1-1/4" 90 degree Tail-piece.

Plumber To Provide:

- 1/2" Hot and Cold domestic supply lines with straight 1/4 turn-stop and 3/8" compression
- 1-1/2" DWV with P-Trap as shown

Note: All height dimensions are referenced ABOVE the FINISHED FLOOR ("AFF").

When planning the rough opening, it is critical to measure from the installed Finished Floor, or account for its eventual depth if it is not yet installed.



2 - REQUIRED TOOLS / UNPACKING and INSPECTING

REQUIRED TOOLS

Phillips Head Screw Driver
Electric Drill
3/8" Drill Bit and Counter Sink
Level

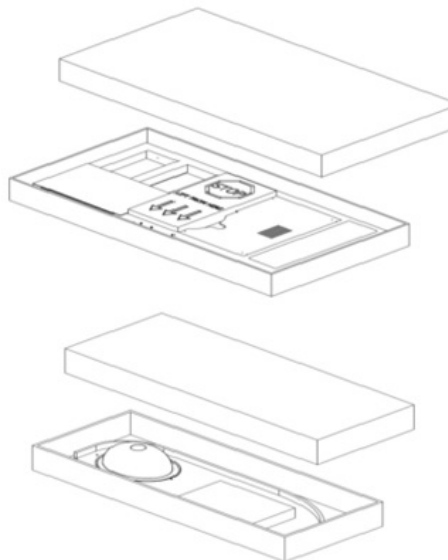
1. Inspect all shipping containers for visible damage upon arrival. If transit damage is found photograph damage, and contact Ergonomic Products immediately. (This will expedite the corrective process).

2. Use safe lifting procedures to free the product from the container, and remove all packing material and any accessory boxes from shipping container.

3. Lay individual components on clean surface to avoid scratching, and inspect contents. If damage is found, contact Ergonomic Products immediately.

4. Do not discard accessory boxes without thoroughly confirming they are empty first.

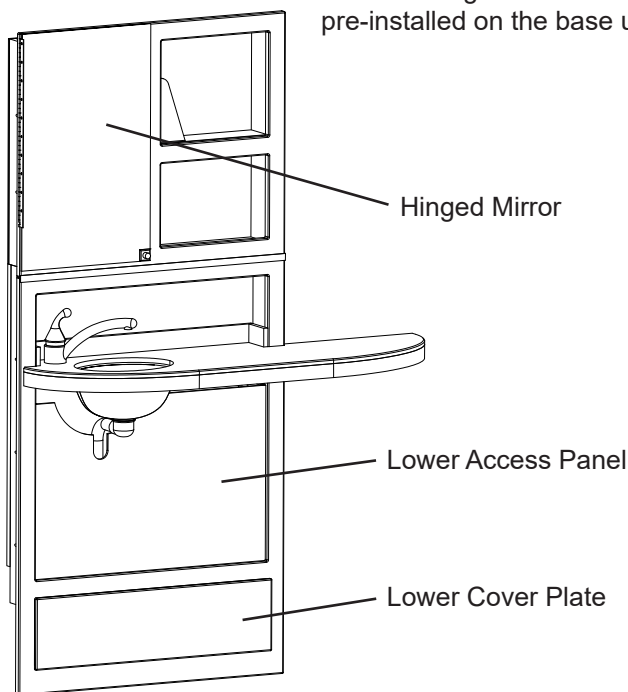
All claims against the freight carrier must be initiated at the time the damaged items are received. The claim is the responsibility of the customer.



PARTS LIST

Check that the configuration/options for your product(s) are correct. If anything is damaged or missing, please contact Ergonomic Products customer service at 1-866-ERGO-4-US.

The following items come pre-installed on the base unit



Additional items:

(1) 1-1/4" 90° Sink Tail-piece
(not included if unit is purchased without sink)



(1) Extended Counter Backsplash
(2) Side Backsplash
(1) Rear Backsplash
(1) 12" x 1" wooden Counter Support Cleat
(1) 2.8 oz tube of Silicone Adhesive

(2) Support "L" Brackets



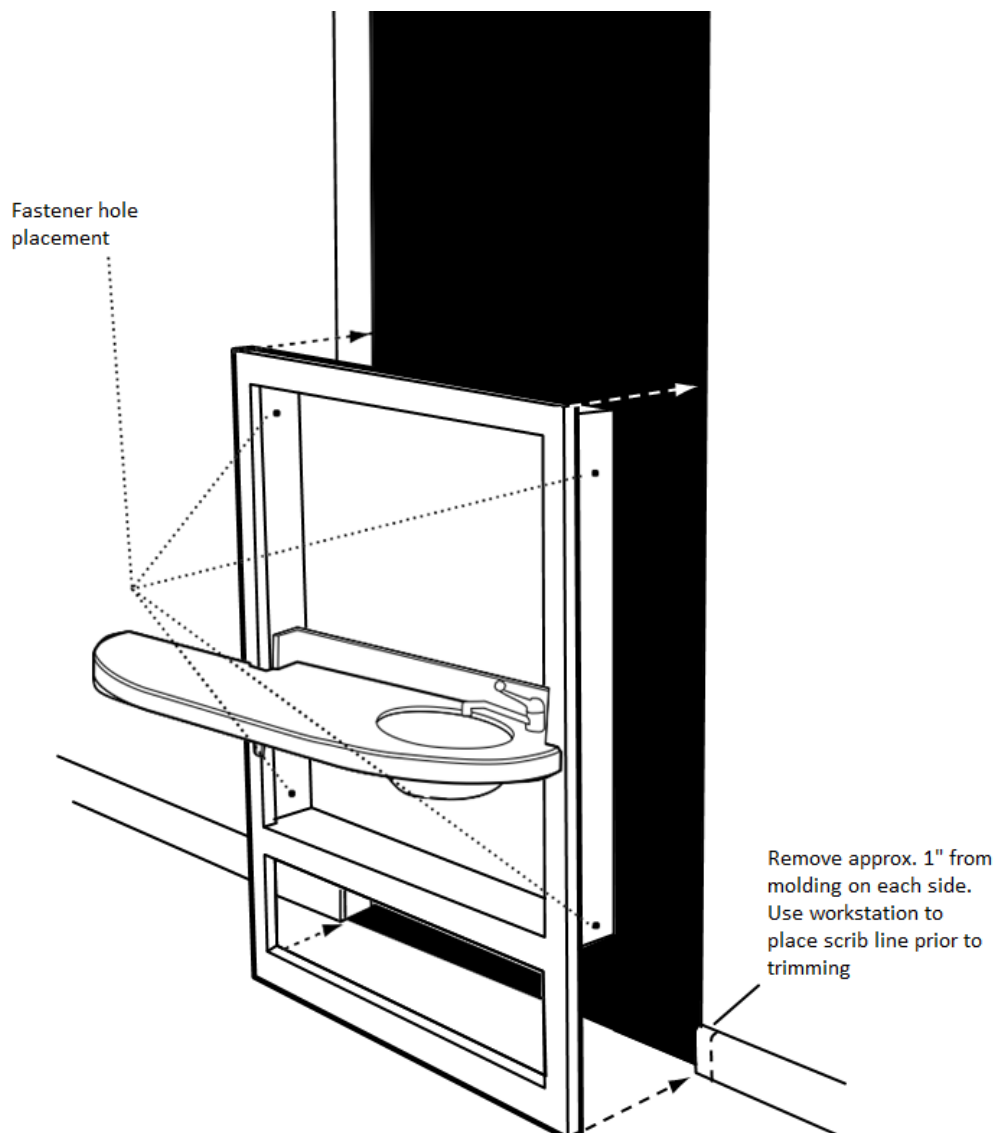


3 - INSTALLATION

Position lower assembly so that bottom of face frame sits on the floor. If the floor is not level or opening is not plumb, some shimming may be required.

1. Place lower assembly into cavity, make scribe lines for removal of base board molding around cavity to compensate for lower assembly.
2. Insert Lower assembly into opening.
3. Finish fastening lower assembly by fastening four (4) screws* using pre-drilled holes.

****Suggested screw size #8 2-1/2 flat head screw***

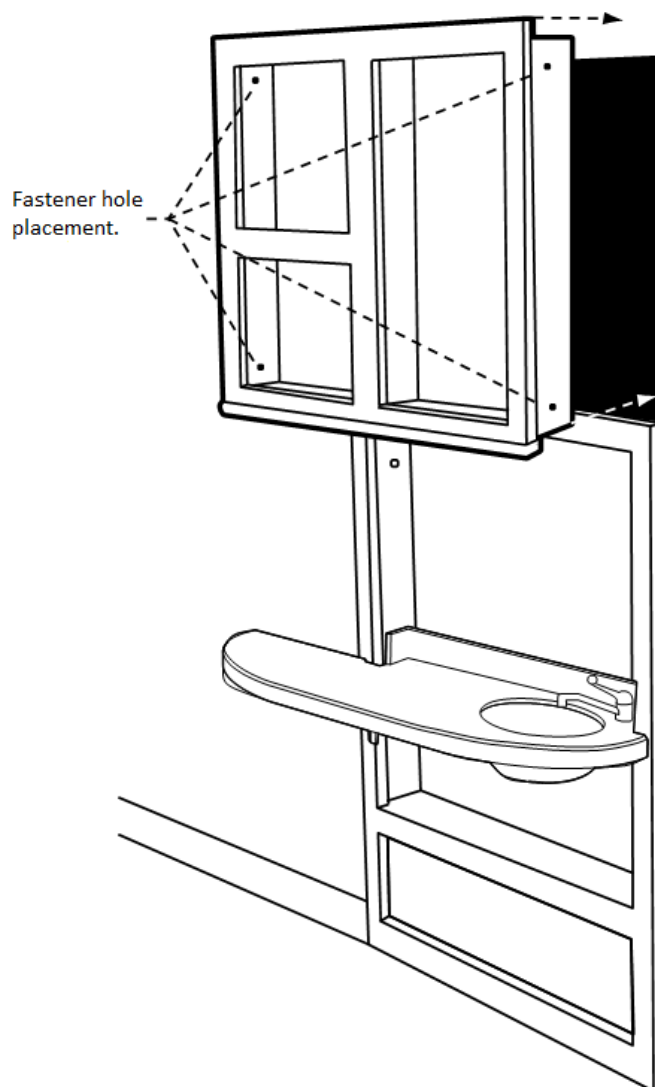




3 - INSTALLATION

1. Install Upper Assembly, making sure it sits fully on lower section and tight against wall.
2. Secure same as Lower Assembly with (4) flat-head screws* using pre-drilled holes.

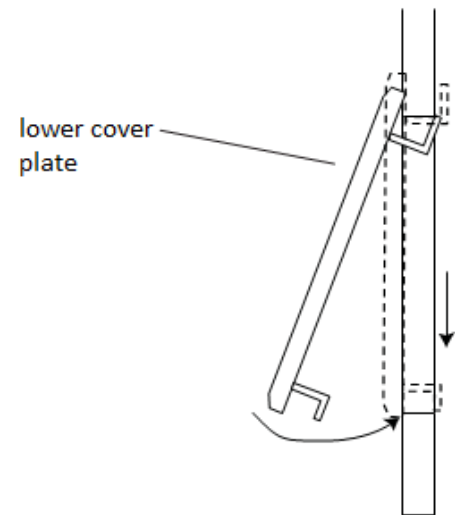
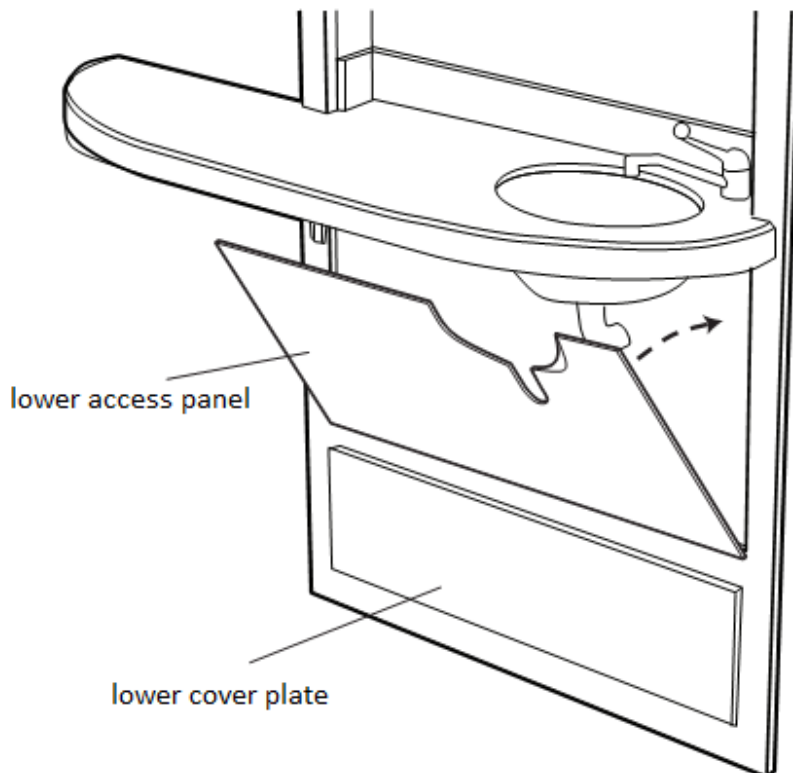
****Suggested screw size #8 2-1/2 flat head screw***





3 - INSTALLATION

1. To install the Lower Access Panel on all 32" Inwalls: Insert the bottom edge of the Lower Access Panel (fig. 17) first and rotate upper edge of the Lower Access Panel into position, Reverse this process for the removal of the Lower Access Panel.
2. To install the lower cover plate on all 32" Inwalls; Insert top of lower cover plate, lift and rotate into position and release. (See fig. 18)





4 - MAINTENANCE

Cleaning instructions

Painted and Anodized Aluminum Surfaces

Clean with mild detergent, damp cloth and dry thoroughly after cleaning.

Do NOT use alcohol or solvent based cleaners, ScotchBrite or other abrasive pads.

Do NOT use any cleaning products that contain HYDROGEN PEROXIDE.

CORIAN® Surfaces

Clean with warm, soapy water or any non-abrasive ammonia based cleaner or disinfectant. Dry thoroughly after cleaning. For tougher stains, use Clean EnCounters® from DuPont.

Do NOT use window-cleaning solutions (they will leave a waxy build-up), ScotchBrite or other abrasive pads.

For more information on cleaning CORIAN surfaces, go to:

<http://www.dupont.com/products-and-services/construction-materials/surface-design-materials/brands/corlan-sol-id-surfaces/articles/how-to-clean-corlan.html>