

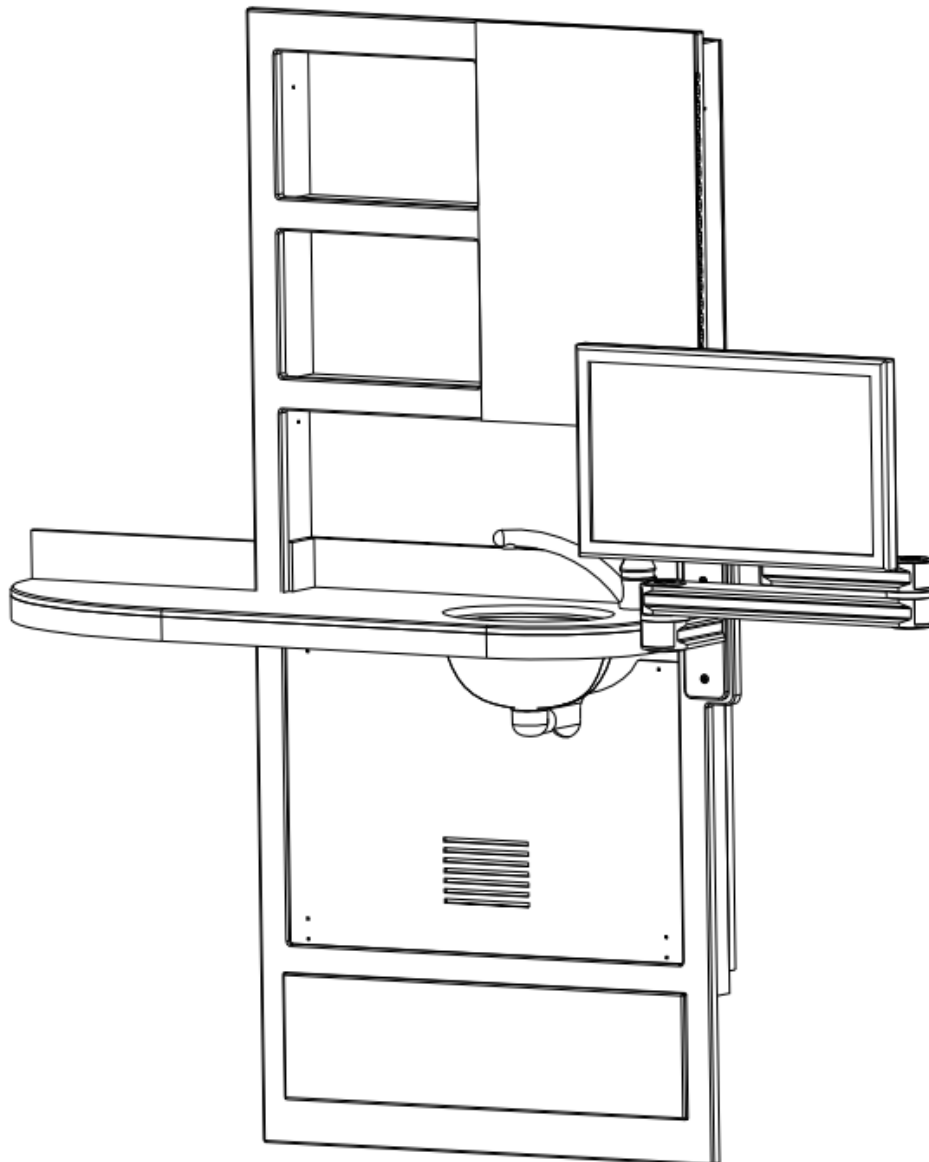


Ergonomic Products

Performance Without Compromise®

Specification / Installation and Guide

32" INWALL™ COMFORT MEDIA



Monitor not included

Right mounted sink.
CORIAN® counter extension to left.

Product ID: N9B
Manual version: 2.0



Thank you for purchasing the Ergonomic Products **32" Inwall™ Comfort Media**

Years of research by dentists, engineers and designers have made this a uniquely effective product in the industry. We stand behind our equipment, and genuinely believe it to be the best available on the market.

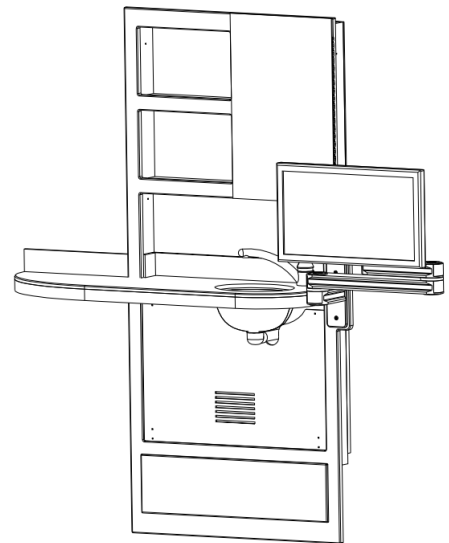
Should you have any questions regarding the product's installation or use, please don't hesitate to call our customer service specialists at **1-866-ERGO-4-US**. We may also be reached via email at **equip@ergonomic-products.com**.

We hope you enjoy the benefits and quality of your new equipment and look forward to handling your future needs as you and your practice continue to grow!

- *The Ergonomic Products Team*

CONTENTS:

1. Specifications and Site Planning.....	3
2. Required Tools / Unpacking and Inspecting.....	5
3. Installed.....	6
4. Maintenance.....	9
5. Service and Warranty Information.....	10

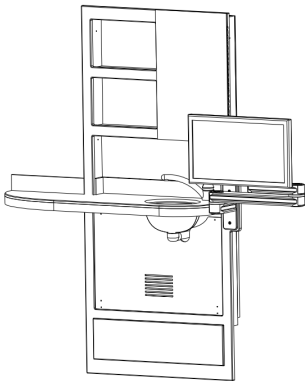


QUESTIONS?

**Call our Customer Service Specialists at:
1-866-ERGO-4-US**



1 – SPECIFICATIONS and SITE PLANNING



USE & FEATURES

- Inwall storage cabinet
- Counter space
- Digital Media Presentation
- Sink

VARIANT/OPTION NOTATIONS

Sink mounted LEFT
Counter extension RIGHT

Note: Product also available with RIGHT mounted sink, or without sink. Confirm accuracy of product prior to installation.

BASIC UTILITY REQUIREMENTS

*Plumbing

- Hot & Cold feed lines
- Drainage & venting

Electrical

- 120v feed (outlet)
- Intra/Inter-net feed (data-port)

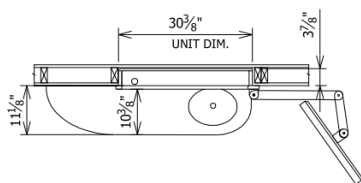
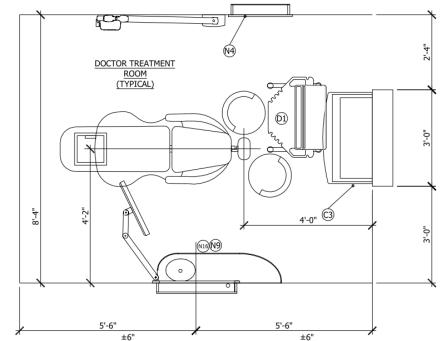
*If unit is purchased without sink, disregard plumbing requirements.

IDEAL LOCATION CONFIGURATION

Right Sink with Left Counter Extension, ideally for Left Handed Doctor rooms.

To maximize monitor arm geometry, the 32" Comfort Media should be placed roughly 5' 6" from the headwall (as shown). Dimensional tolerance of 6" will allow maximum effect for patient presentation and treatment planning.

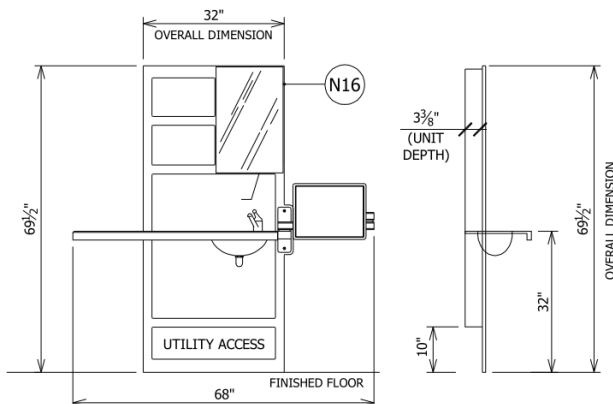
For alternate room layouts or equipment configurations, position unit so that right side of cabinet lines up with head of chair when reclined.



DIMENSIONS

NOTE: All Height Dimensions are referenced away from the FINISHED FLOOR ("AFF")

When planning the Rough Opneing, it is crtical to measure from the installed Finish Floor, or account for its eventual depth if it is not yet installed.

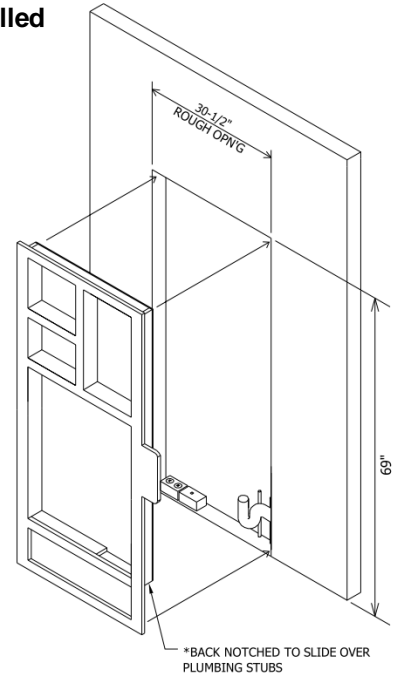
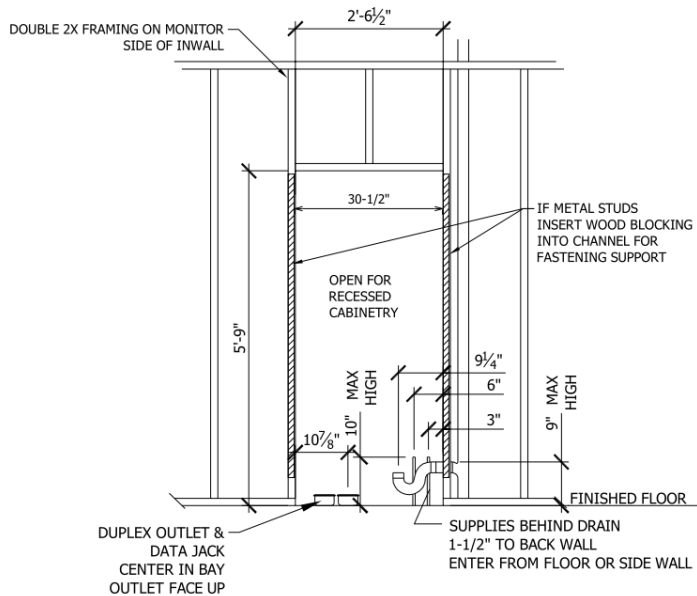




1 – SPECIFICATIONS and SITE PLANNING

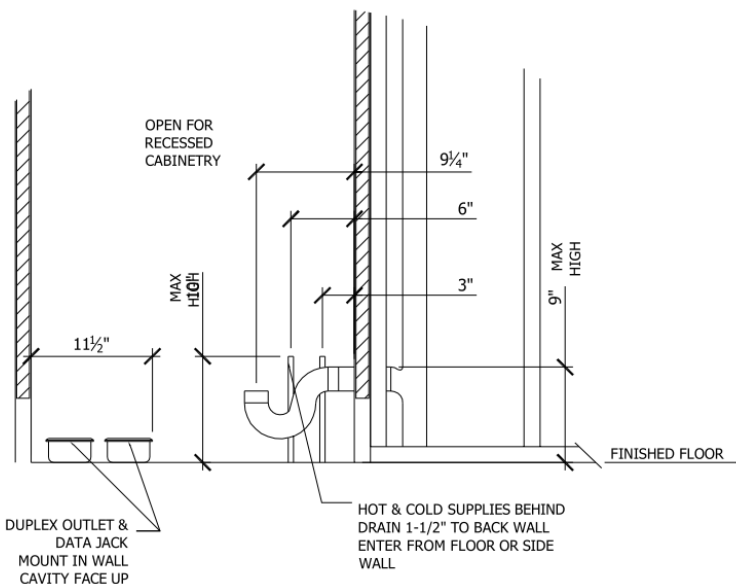
ROUGH OPENING

NOTE: All Height Dimensions are referenced away from the FINISHED FLOOR ("AFF")
When planning the Rough Opening, it is critical to measure from the installed Finish Floor, or account for its eventual depth if it is not yet installed.



UTILITY SPECIFICATIONS AND DETAIL

NOTE: All Height Dimensions are referenced away from the FINISHED FLOOR ("AFF")



Electrical Specifications

- 120v Duplex Outlet
(computer and monitor)
- Cat 5 (or better) Data Jack

Electrical Specifications

Unit is supplied with delta 570 Single Lever Faucet and 1-1/4" 90° Tail-Piece.

Plumber to provide:

- 1/2" Hot & Cold domestic supply lines with straight 1/4 turn-stop and 3/8" compression.
- 1—1/2" DMV with P-Trap as shown.



2 – REQUIRED TOOLS / UNPACKING and INSPECTING

REQUIRED TOOLS

Phillips Head Screw Driver
Electric Drill
3/8" Drill Bit & Counter sink
Level

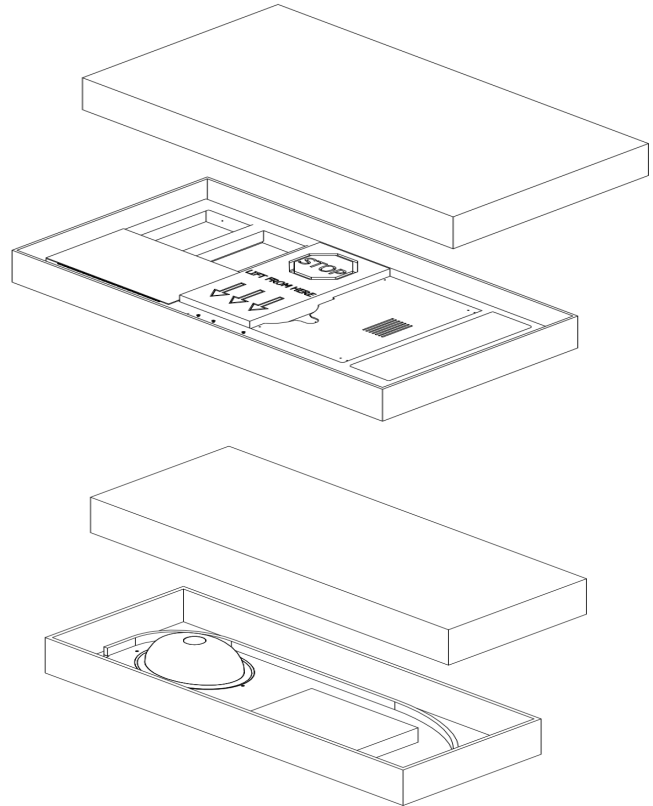
1. Inspect all shipping containers for visible damage upon arrival. If transit damage is found photograph damage, and contact Ergonomic Products immediately. (This will expedite the corrective process).

2. Use safe lifting procedures to free the product from the container, and remove all packing material and any accessory boxes from shipping container.

3. Lay individual components on clean surface to avoid scratching, and inspect contents. If damage is found, contact Ergonomic Products immediately.

4. Do not discard accessory boxes without thoroughly confirming they are empty first.

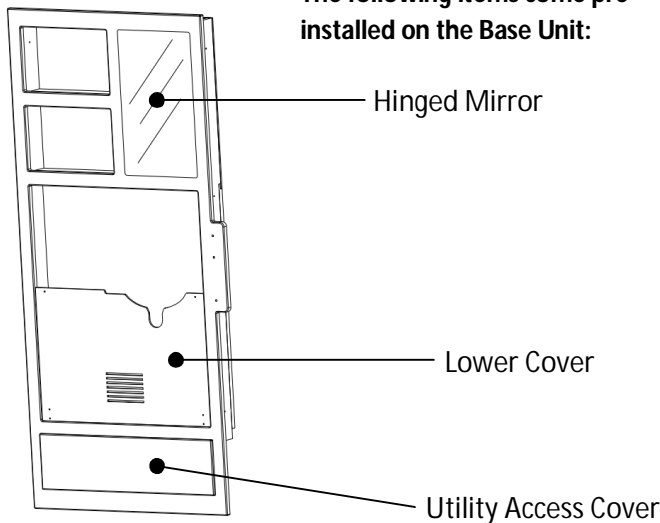
All claims against the freight carrier must be initiated at the time the damaged items are received. The claim is the responsibility of the customer.





PARTS LIST

Check that the configuration/options for your product(s) are correct. If anything is damaged or missing, please contact Ergonomic Products customer service at 1-866-ERGO-4-US

The following items come pre-installed on the Base Unit:



Additional items:

- (1) 1-1/4" 90° Sink Tail-piece 
- (not included if unit is purchased without sink)
- (4) #10-32 x 3/4" screws
- (4) #10-32 x 1" screws
- (1) Extended Counter Backsplash
- (2) Side Backsplash
- (1) Rear Backsplash
- (1) 12" x 1" wooden Counter Support Cleat
- (1) 2.8 oz tube of Silicone Adhesive
- (2) Support "L" Brackets 
- (1) Boxed ICW T2 Monitor Mount includes:

- Mounting Bracket & Screws
- Media Arm
- Installation Sheet



3 - INSTALLATION

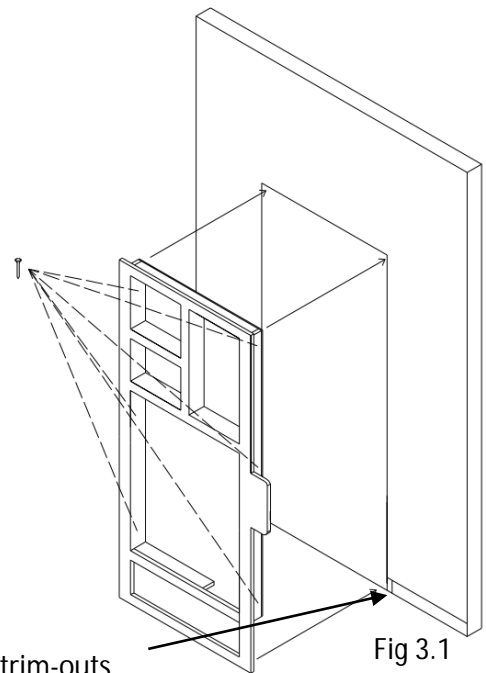


IMPORTANT! Consult the specifications on page 4 to confirm the on-site accuracy and conformance of Rough Opening and Plumbing / Electrical Stubbing. Be aware that this product is available in a variety of configurations that will affect site preparation.

The face frame of the 32" Inwall™ Comfort Media is installed at finished floor level and overlaps the rough opening, eliminating the need for finish-work after the unit is installed. However, **any existing baseboard molding will need to be trimmed back approximately 1" from the rough opening** to allow the unit to mount flush against the wall. For cleanest installation, dry-fit the unit and mark scribe lines on the baseboard for trimming (see fig. 3.1).

STEP 1 – INSERT AND SECURE CABINET

1. Before inserting unit, counter-sink the six pre-drilled mounting holes on cabinet sides.
 2. Insert unit into rough opening, and confirm clearance on trimmed baseboard (see warning above).
 3. Confirm face is evenly flush against wall. If large gaps are present, mark area and cut down wall surface to remove high spots on wall board.
- Small gaps can be filled with any paintable grade caulking after installation of the product.
4. While keeping unit flush against the wall, confirm that it is level. If it is not, slightly raise one side until plumb.
 5. While keeping unit flush against the wall, secure raised side to studs through pre-drilled mounting holes using three supplied #8 x 2-1/2" flat head screws.
 6. Secure other side with remaining three #8 screws.



STEP 2 – INSTALL MONITOR ARM

1. Attach ICW T2 Monitor Mount to face frame using 3 #14 Phillips head screws, provided in T2 package (fig 3.2).
2. Complete the Monitor Mount assembly by following the installation instructions steps 2-9 provided with the LCW T2 Wall Mount.

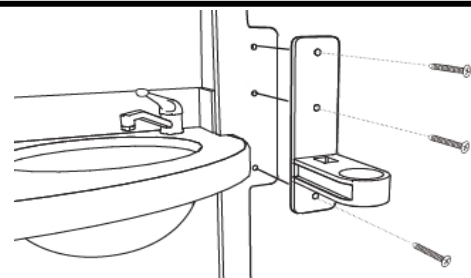


Fig 3.2

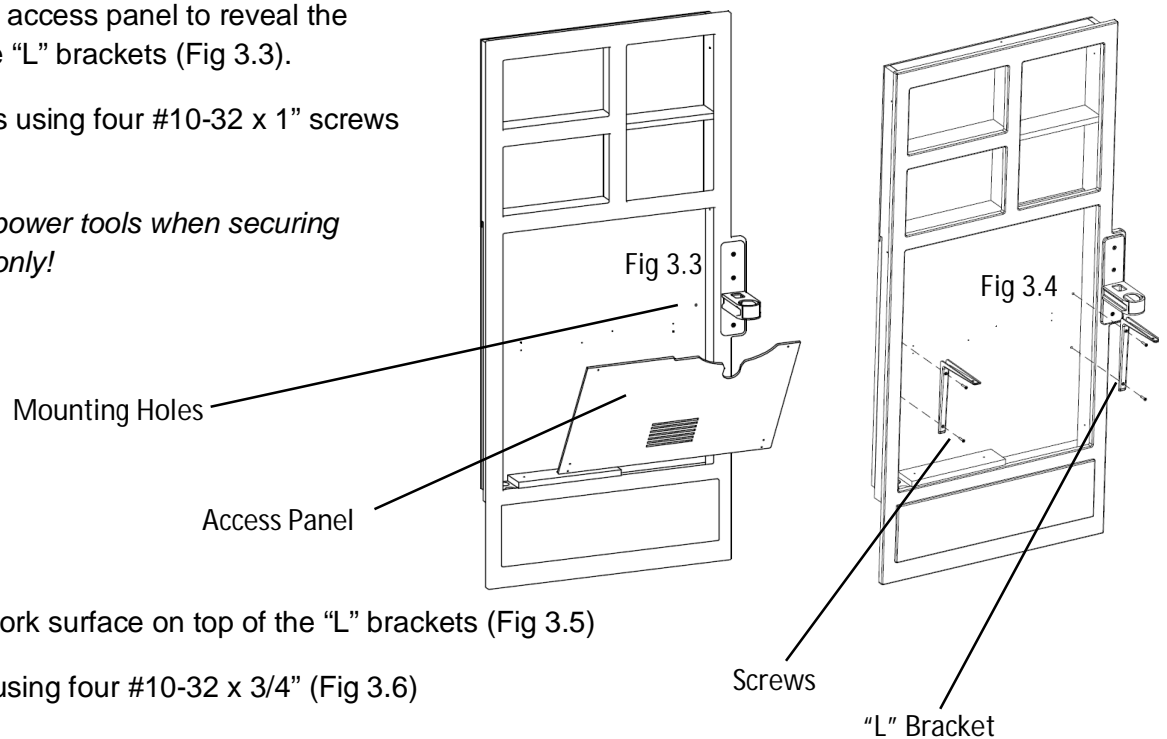


3 – INSTALLATION cont'd

STEP 3 – INSTALL "L" BRACKETS AND SECURE CORIAN

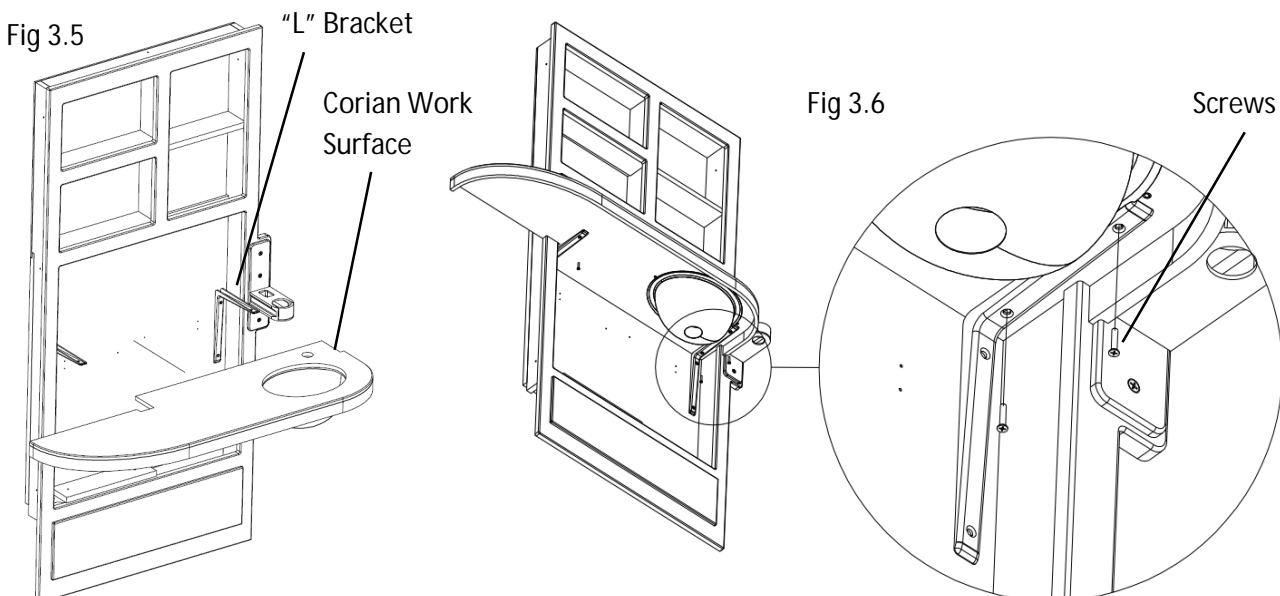
1. Remove the middle access panel to reveal the mounting holes for the "L" brackets (Fig 3.3).
2. Secure the brackets using four #10-32 x 1" screws (Fig 3.4).

Caution: Do not use power tools when securing screws, hand tighten only!



3. Place the Corian Work surface on top of the "L" brackets (Fig 3.5)
4. Secure the Corian using four #10-32 x 3/4" (Fig 3.6)

Caution: Do not use power tools when securing screws, hand tighten only! Over tightening screws will damage Corian Work surface.



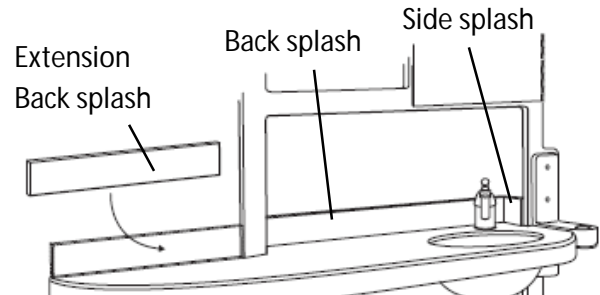
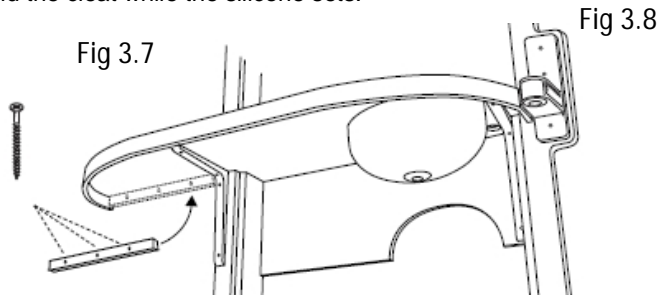


3 – INSTALLATION cont'd

STEP 4 – INSTALL SUPPORT CLEAT AND BACKSPLASH

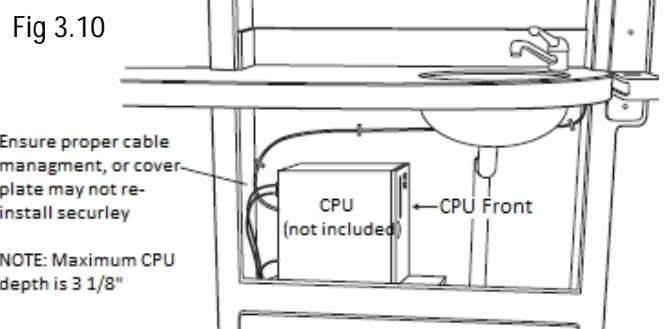
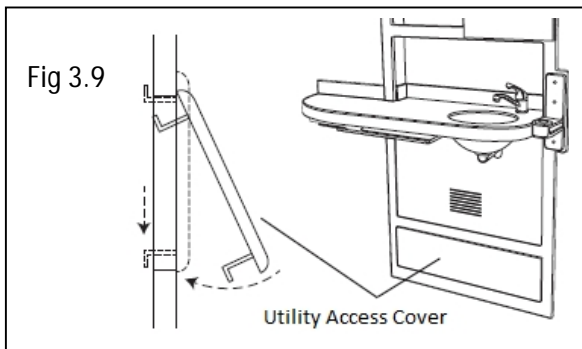
The extended counter is supported by a 12" x 1" wooden cleat secured directly to the wall beneath the counter after the main cabinet is secured. The backsplash on this part of the counter is also secured directly to the wall.

1. Apply silicone to the back of the wooden support cleat.
2. Press cleat against wall, keeping firm contact with underside of extended counter (fig 3.7).
3. Secure cleat with three supplied #8 x 2-1/2" flat head screws. Do not overtighten screws; they are simply used to hold the cleat while the silicone sets.
4. Apply silicone adhesive to the back of each backsplash.
5. Adhere both Side Splash pieces first, Then Adhere the Back Splash last.
6. Press firmly to wall, butting against faceframe (fig 3.8). Be sure to position backsplash with indicator arrow UP.

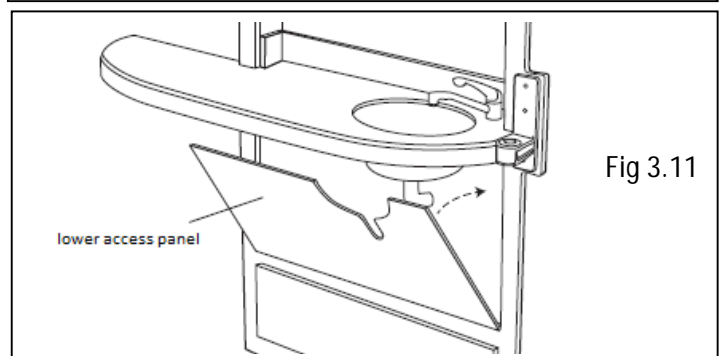


STEP 5 – COMPLETE PLUMBING AND COMPUTER INSTALLATION

1. To access plumbing stubbing, remove Utility Access Cover. Slide cover up to clear lower bracket, tilt bottom towards you and lower cover away from face frame (fig 3.9). (Reverse this process to replace the cover.)
2. Have a licensed tradesman make final plumbing connections.



3. Position CPU on shelf and run computer and communications cable as desired (fig. 3.10).
4. Replace lower access panel (fig 3.11).





4 - MAINTENANCE

Cleaning instructions

Painted Surfaces

Clean with mild detergent, damp cloth and dry thoroughly after cleaning. Do NOT use alcohol or solvent based cleaners, ScotchBrite or other abrasive pads.

CORIAN® Surfaces

Clean with warm, soapy water or any non-abrasive ammonia based cleaner or disinfectant. Dry thoroughly after cleaning. For tougher stains, use Clean EnCounters® from DuPont.

Do NOT use window-cleaning solutions (they will leave a waxy build-up), ScotchBrite or other abrasive pads.

For more information on cleaning CORIAN surfaces, go to:

<http://www.dupont.com/products-and-services/construction-materials/surface-design-materials/brands/corian-solid-surfaces/articles/how-to-clean-corian.html>

Stainless Steel Sinks

Always apply stainless steel cleaner/polish with a nonabrasive cloth or sponge, working with - not across - the grain.

Do NOT use ScotchBrite or other abrasive pads.

Clean with standard house-hold cleaning agents or disinfectant OTHER than chloride products.

Chrome Faucets

Do NOT use ScotchBrite or other abrasive pads.

Clean with standard house-hold cleaning agents or disinfectant OTHER than those containing ammonia, bleach or acid.



13 – WARRANTY INFORMATION

Extract from 950-029 Rev: D

Ergonomic Products offers the following warranty on our products.

- ❖ 5-year limited warranty on all Corian® surfaces*
- ❖ 3-year warranty on all RapidCarts®**
- ❖ 5-year warranty on all EP 3 Series® Patient Chairs***
- ❖ 3-year warranty on all Workstations®
- ❖ 3-year warranty on all EP Lighting****
- ❖ 1-year warranty on all cabinetry, laminates and components
- ❖ 1-year warranty on all storage tubs and bins
- ❖ 3rd party components carry the original manufacturer's warranty:
 - 1-year warranty on scalers
 - 1-year warranty on cure lights
 - 1-year warranty on Ultraleather upholstery
 - 1-year warranty on BienAir Electric Motors

* Limited to manufacturer's defects only

** Excludes powder coated RapidCarts® tops (1 year warranty)

*** Excludes upholstery (1 year warranty)

**** Excludes bulbs

Discontinued parts or components cannot be serviced once the warranty has expired. Additional 3rd party sources may be available.

We promise to offer you prompt, inexpensive repairs. Products under warranty will be fixed as quickly as possible and service will be done on site if feasible. If it must be returned to our technical center, it will be returned to you without additional shipping charges. If the time needed to repair it will affect your practice schedule, we will try to provide a loaner so as to not interrupt your service to your patients. In an emergency, our Doctor Delivery Power Channels® will ship overnight.

Should your office damage equipment, due to improper use or inadequate installation or maintenance, we'll still make sure to fix your problem, promptly and without complaint. The warranty will not apply, nor is there a warranty for fabric damaged by infection control products.

We promise to continuously satisfy you with our products and services. We want to hear from you and help you improve your practice.

Sincerely,
The Staff at Ergonomic Products, Inc.
1-866-ERGO-4-US