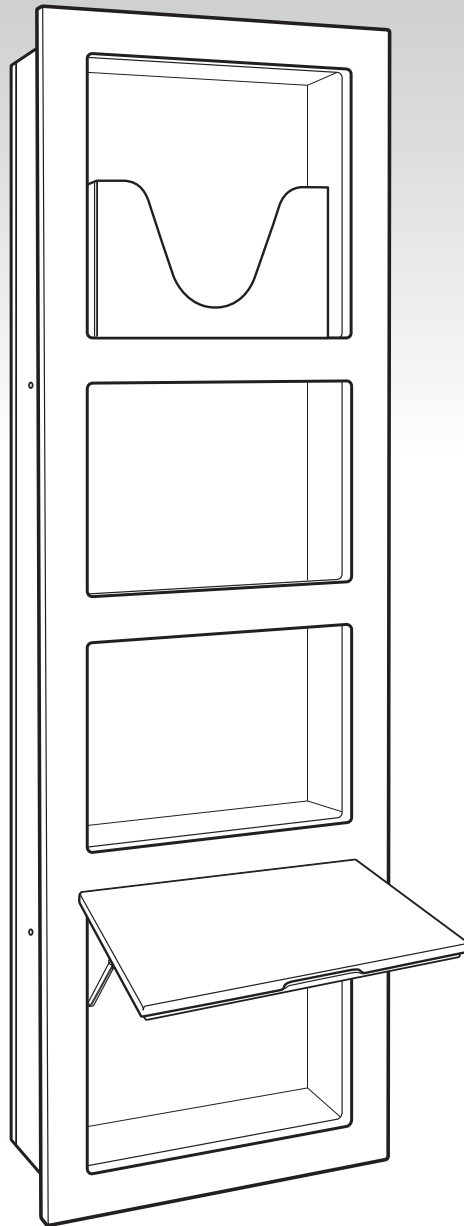




ergonomic products
Performance Without Compromise™

Specification and Installation Guide

16" INWALL™ STORAGE



Shown with optional Lift Up Writing Surface
and Paper Towel Holder

Product ID: **N1B**
950-090 Manual version: **C**



Thank you for purchasing the Ergonomic Products 16" Inwall™ Storage Cabinet.

Years of research by dentists, engineers and designers have made this a uniquely effective product in the industry. We stand behind our equipment, and genuinely believe it to be the best available on the market.

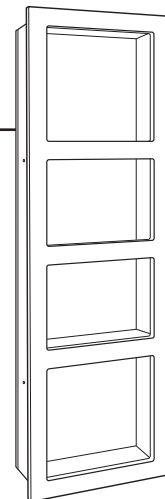
Should you have any questions regarding the product's installation or use, please don't hesitate to call our customer service specialists at **1-866-ERGO-4-US**. We may also be reached via email at **equip@ergonomic-products.com**.

We hope you enjoy the benefits and quality of your new equipment and look forward to handling your future needs as you and your practice continue to grow!

- The Ergonomic Products Team

CONTENTS:

1. Specifications and Site Planning	3
2. Required Tools / Unpacking and Inspecting	5
3. Installation	5
4. Maintenance	6



QUESTIONS?

Call our Customer Service Specialists at:
1-866-ERGO-4-US.



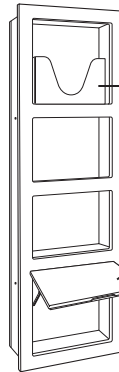
1 - SPECIFICATIONS and SITE PLANNING

USE & FEATURES

- Inwall storage cabinet
- Designed to hold standard dental glove and mask boxes

CONFIRM OPTIONS

This product is available with a variety of options and option-combinations, listed right. Please confirm the accuracy of product received, prior to installation.



AVAILABLE OPTIONS

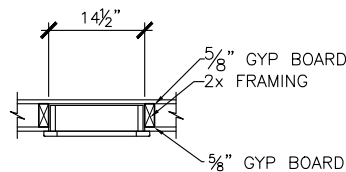
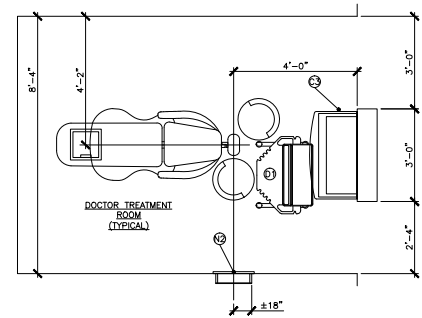
- Paper Towel Holder (shown)
- or - Patient Chart Holder
- Lift-up Writing Surface (shown)
- or - Med-waste Flip-Out

Note: Site planning and installation are identical for all currently available options and combinations.

IDEAL LOCATION CONFIGURATION

The primary location for 16" Inwall Storage units is in the operatory, on the right-hand side of the headwall. Placing the centerline of the unit directly in line with the head of the patient chair typically provides the assistant with the greatest access.

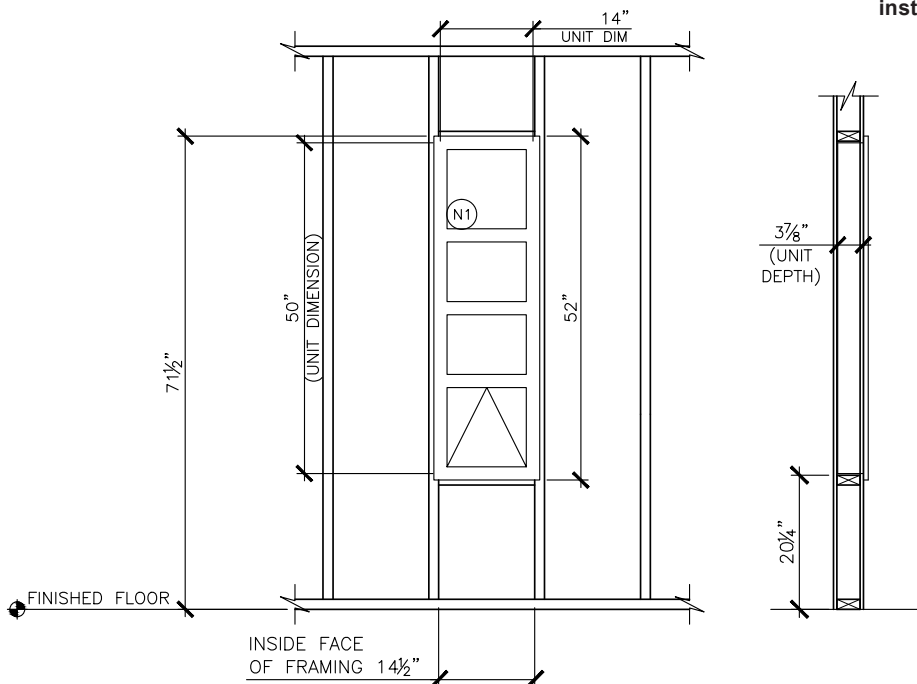
However, these units are very versatile and can be extremely useful in many areas of the practice, including multiple locations within a single operatory.



DIMENSIONS

NOTE: All Height Dimensions are referenced ABOVE the FINISHED FLOOR ("AFF").

When planning the Rough Opening, it is critical to measure from the installed Finished Floor, or account for its eventual depth if it is not yet installed.

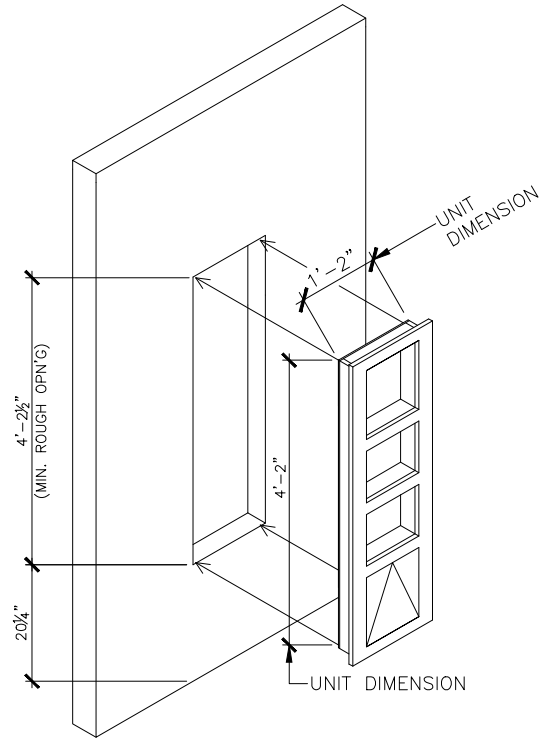
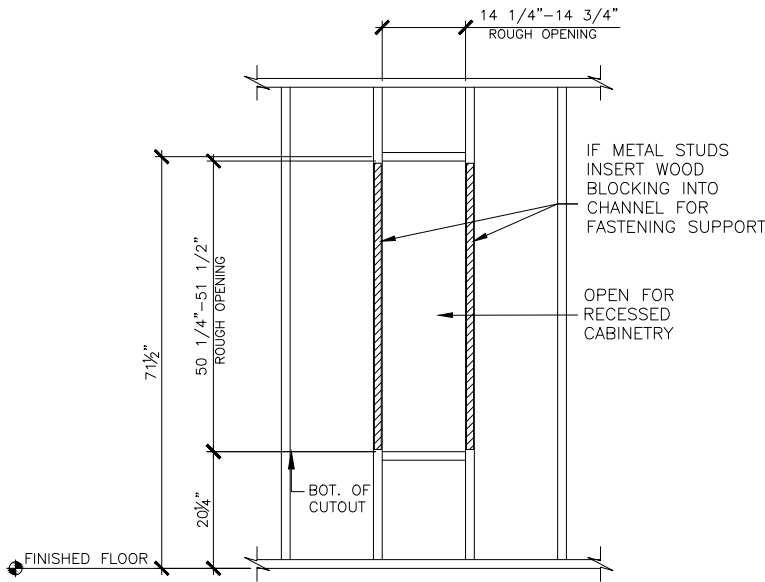




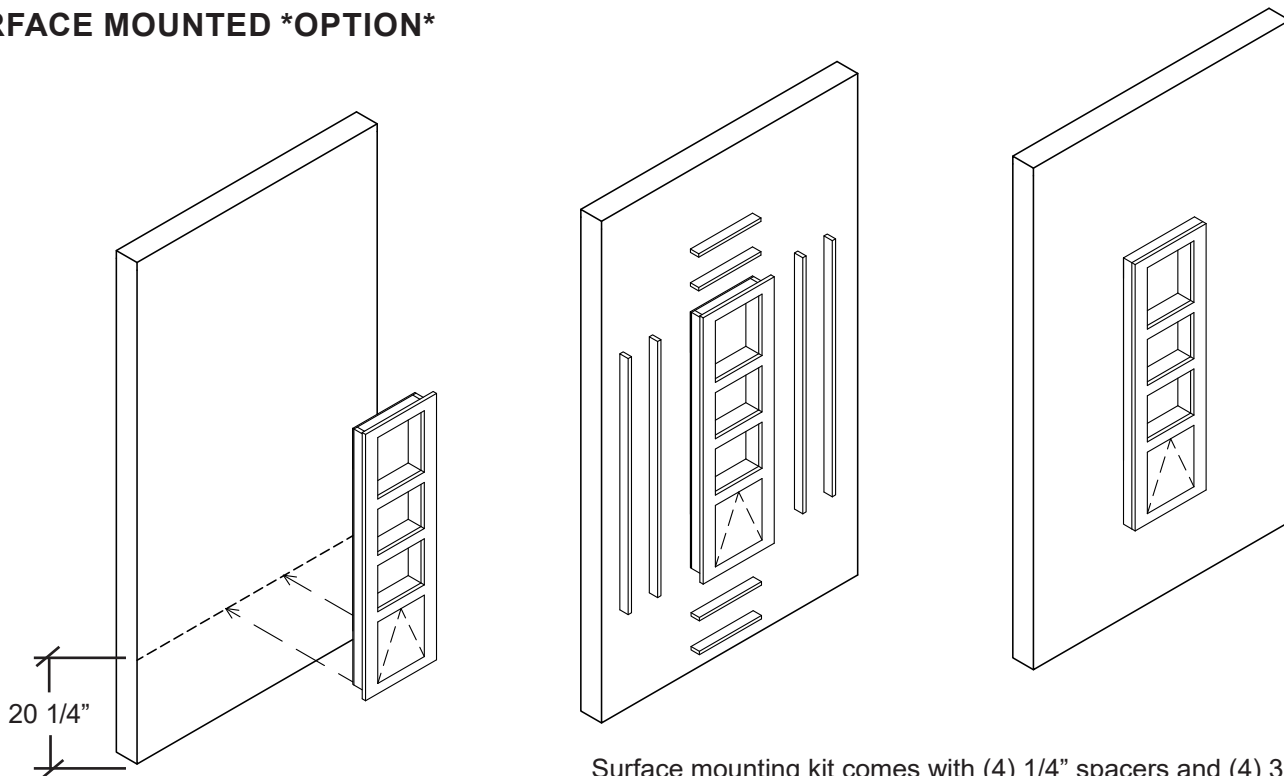
1 - SPECIFICATIONS and SITE PLANNING cont'd

ROUGH OPENING

NOTE: All Height Dimensions are referenced ABOVE the FINISHED FLOOR ("AFF").
When planning the Rough Opening, it is critical to measure from the installed Finished Floor, or account for its eventual depth if it is not yet installed.



SURFACE MOUNTED *OPTION*



Place the inwall 20 1/4" above the finish floor, and fasten to wall through the back. (Block as needed by others)

Surface mounting kit comes with (4) 1/4" spacers and (4) 3/4" spacers. Place the 1/4" Spacers on the outside of the frame first and secure to the frame. Stack on top of the 1/4" spacers the 3/4" spacers and secure to the frame. Surface mounting is complete.



2 - REQUIRED TOOLS / UNPACKING and INSPECTING

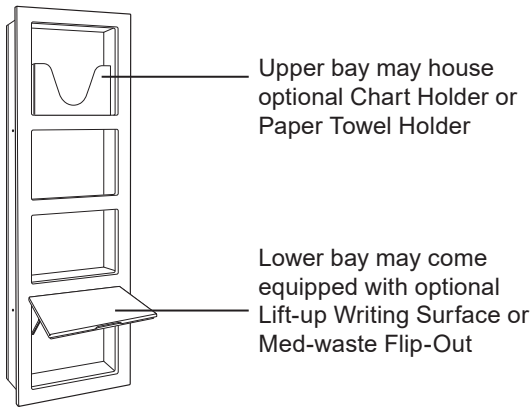
REQUIRED TOOLS

Phillips Head Screw Driver
Electric Drill
3/8" Drill Bit and Counter Sink
Level

1. Remove all packing material from box.
2. Use safe lifting procedures to carefully remove unit and place on clean surface near the installation site.

PARTS LIST

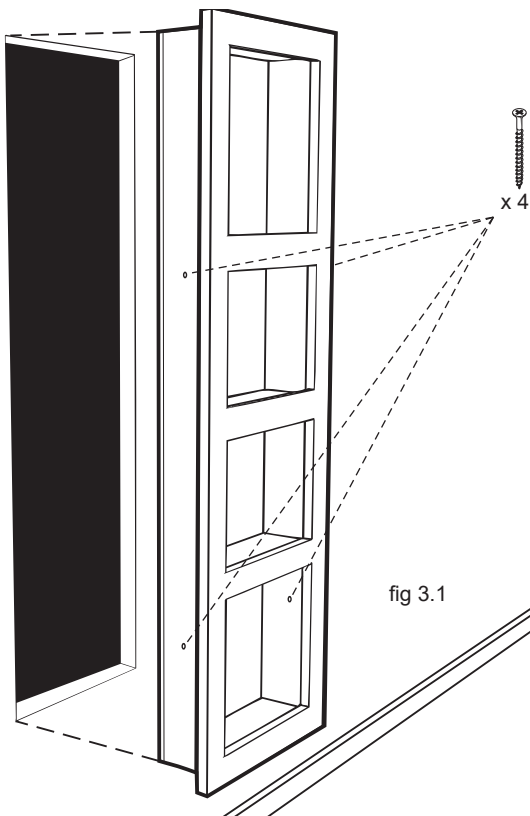
Check that the configuration/options for your product(s) are correct. If anything is damaged or missing, please contact Ergonomic Products customer service at 1-866-ERGO-4-US.



The 16" Inwall Storage Unit comes fully assembled, including any purchased options such as a lift up writing surface, med-waste flip out, or chart/paper-towel holders.

These options do not affect installation.

3 - INSTALLATION



1. Before inserting unit, counter-sink the four pre-drilled mounting holes on cabinet sides.
2. Dry-fit unit in rough opening to confirm face is evenly flush against wall. If large gaps are present, mark area and cut down wall surface to remove high spots on wall board.
3. When surface has been adequately prepared, insert unit into rough opening for final installation.
4. While holding unit flush to wall, check that it is level. If it is not, slightly raise one side until unit is plumb.
5. While keeping unit flush against the wall, secure raised side to studs through pre-drilled mounting holes using two screws*.
6. Secure other side with remaining two screws*.

* Suggested screw size #8 - 2 1/2" flat head screws.



4 - MAINTENANCE

Cleaning instructions

Painted Surfaces

Clean with mild detergent, damp cloth and dry thoroughly after cleaning.
Do NOT use alcohol or solvent based cleaners, ScotchBrite or other abrasive pads.