

Universal Headwall™ (Items C1B1, M3C1 & C2B1)



The Universal Headwall is built to **maximize utility & efficiency** of our operatory designs and industry-leading delivery systems.

Standard Features

C1B1 - Computer Storage Cabinet

- 4.4 cubic feet for storage, with access doors on each side
- Full extension slide-out Shelf for CPU (right side of cabinet)
- Adjustable Shelves for bulk storage (left side)
- Monitor Mounting Bracket (monitor not included)

M3C1 - Slat Wall

- Nearly 5 sq ft of Slat Wall to display and store accessory materials
- Corian Top-cap included

C2B1 - Universal Work Center

- 4 sq ft of solid Corian Work Surface
- Retractable Counter Extensions provide an additional 2 sq ft of Work Surface
- 2 deep Storage Drawers
- Quick Connect Umbilical port (standard)
- Utility Access Panel

CONFIGURATION and UPGRADE CHOICES

Cabinet Color/Finish Selection:

- Cabinet available in standard EP color choices.
- or - Upgrade to woodgrain finish. (Standard EP selections)

Corian Work Surface:

- Available in standard and premium EP Corian color choices.

Utility Configuration

- Standard Umbilical Quick Connect
- or - Utility Plate and Clamp-mount for 3rd party utilities

Optional Sink Upgrade for C2B1 Work Center - Item #315-015

Sink option includes stainless steel sink & chrome faucet.
Supplied with Corian backsplash (if not using Slat Wall).

The Universal Headwall above is shown with a range of Slat-Wall accessories. Ergonomic Products offers the items below, and others are available from a variety of resellers.

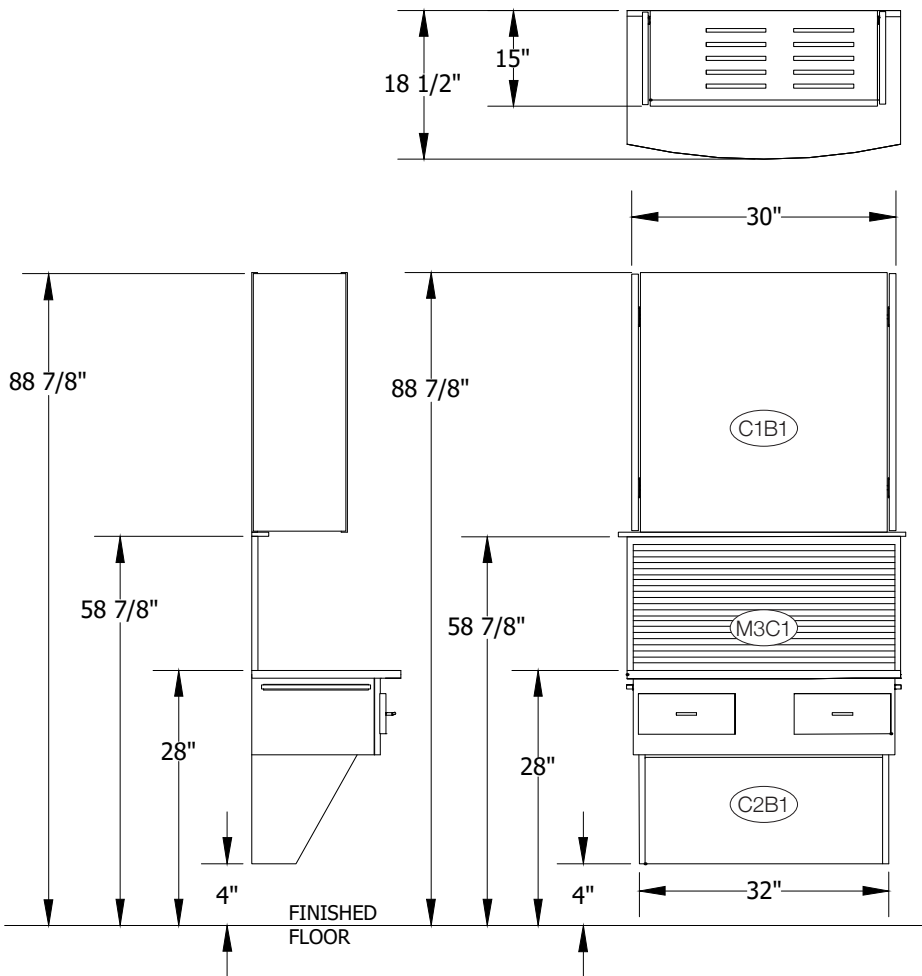
- Med-waste Bracket
- Remote Control Holder
- Sanitation Wipes Holder
- Pad & Pen Holder
- "Goodie Bag" Brackets
- Printer Shelf
- Monitor Bracket
- Single or Triple Glove Box Holders

See page 92 for details.





Dimensions & Utilities



Electrical Specifications

120v AC, 60HZ, 8A
Cat 5 (or better) Data Jack

Air / Vacuum Specifications

Air: 1/4" Dental Style Female QD, 80 psi
Vacuum: 1/2" Copper or PVC Pipe

Plumbing Specifications

Dental Line feed:
- 1/2" Cold or Dedicated Dental supply line with straight 1/4 turn-stop and 3/8" compression

If Unit C2B1 is purchased with Sink -

Sink feed:
- 1/2" Hot & Cold domestic supply lines with straight 1/4 turn-stop and 3/8" compression
- 1-1/2" DWV with P-Trap

Ideal Room Location

The Universal Headwall is a highly efficient utility, storage, and work center. It is most effective when used in a dual / head-entry format.

In conjunction with the Universal Workstation, this creates an ideal ergonomic production zone that is out of the patient's line-of-site on entry to the operatory.

