

SlimLine Manhattan Cabinet System™ (Items C3B1, C3B3 & C3B4)



Shown with options, including nitrous cutout & panel. Call for details.
Monitor not included.

A **stylish look** with **enhanced efficiency** – especially for surgical operatories with space constraints.

Featuring our SlimLine aesthetic for a modern look and increased space-savings, the SlimLine Manhattan also introduces our new linear PullDown, which provides a second tier for the Workstation, without extending into the room.

Standard Features

C3B4 - SlimLine Manhattan PullDown

- Linear PullDown Shelf with Corian Work Surface and Keyboard Slide acts as a second tier for the Universal Workstation
- Converts from right-hand use to left-hand use in seconds

C3B3 - SlimLine Manhattan Storage/Printer

- Center Cabinet provides storage, a Printer Shelf, and a Monitor Bracket.

C3B1 - SlimLine Manhattan Lower Cabinet

- Nearly 5 sq ft of solid Corian Work Surface
- Open Shelf suitable for Zirc Tub placement
- Quick Connect Umbilical Port (standard)
- Utility Access Panel

CONFIGURATION, UPGRADE and COLOR CHOICES



Cabinet Color/Finish Selection:

- ☐ Cabinet available in standard EP color choices.
- ☐ - or - Upgrade to woodgrain finish. (Standard EP selections)

Corian Work Surface:

- ☐ Corian available in standard and premium EP Corian color choices.

Utility Configuration

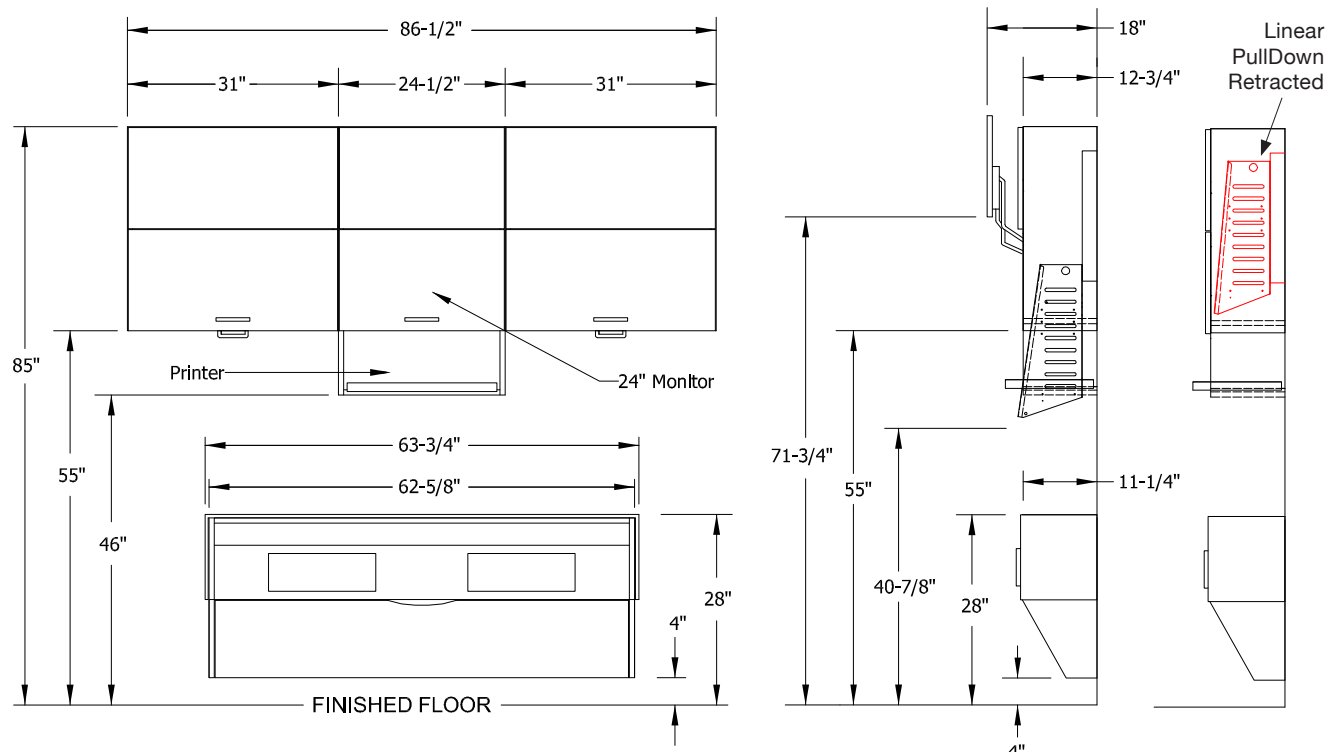
- ☐ Standard Umbilical Quick Connect
- ☐ - or - Utility Plate and Clamp-mount for 3rd party utilities

Also see the **SlimLine Universal Headwall** on page 42. We'll be releasing other items in this line very soon. **Stay tuned!**





Dimensions & Utilities



Electrical Specifications

120v AC, 60HZ, 8A
Cat 5 (or better) Data Jack

Air / Vacuum Specifications

Air: 1/4" Dental Style Female QD, 80 psi
Vacuum: 1/2" Copper or PVC Pipe

Plumbing Specifications

Dental Line feed: 1/2" Cold or Dedicated
Dental supply line with straight
1/4 turn-stop and 3/8" compression

Ideal Room Location

Similar to our standard Manhattan Cabinet System, this SlimLine version is ideal for single-entry / toe-entry operatories and is intended to be used with a single-tier Universal Workstation.

To enhance the space-saving nature of our SlimLine products, we've modified the Corian shelf that acts as a second tier to the workstation. This variation of our Manhattan PullDown shelving travels straight up-and-down, rather than forward into the room.

With its shortened lower cabinet work surface, the SlimLine Manhattan can be positioned significantly closer to the head of the patient chair, reducing the overall length required for your operatories.

