

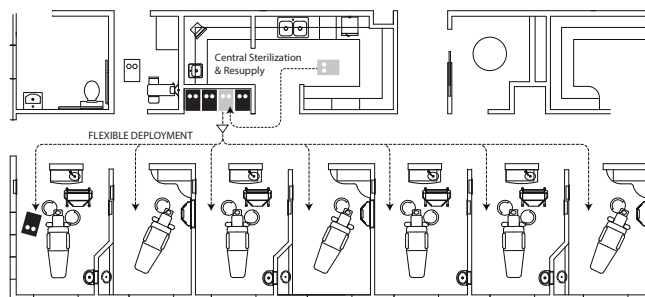
# RapidCart™ Systems

Don't duplicate expensive equipment – **mobilize it!**

RapidCarts allow instantaneous deployment and setup of less frequently used treatment instruments such as those in endodontics, surgery and advanced diagnosis. Distributing technology from room to room – rather than targeting treatment to individual rooms – creates a more flexible and responsive clinical environments and is one of Ergonomic Products' core efficiency principles:

## Any Procedure, Any Room, Any Time.

Ergonomic Products' line of RapidCarts has been designed specifically for dental practices with a narrow profile for ease of movement in operatories, and with large casters for added stability. The standard product work surface is durable Corian, to stand up to the rigors of a medical environment.



Mobile Cart Bay in a 7 Chair Practice

## COLOR OPTIONS - ALL CARTS

### Work Surface:

- ☐ EP Standard Color Corian
- ☐ - or - Premium Corian upgrade
- ☐ - or - Powder-coated top (reduced price)

### Cabinet Color Selections:

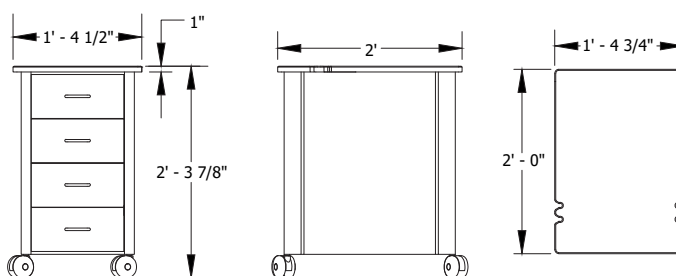
- ☐ Exterior finish available in standard EP colors
- ☐ - or - upgrade to woodgrain finish  
(Standard EP woodgrain finishes)

## Mobile Storage Cart™ (item R1C1)



### Standard Features

- Anodized aluminum Corner-framing
- 4 milled Handpiece Holders
- High-impact plastic Casters
- Precision-bearing Drawer Slides
- Soft-touch Drawer Close for secure transport



Height, width and depth dimensions above are standard for the three carts shown here.

See next page for shelving and utility configurations.



ergonomic products  
Performance Without Compromise™

www.ergonomic-products.com • 866-374-6487

Excerpted from EP Catalog:

950-075revL

## Doctor Specialty RapidCart™ (item R1A1)



### Standard Features

- Wiring Apertures on Work Surface, with stainless steel Cover Plates
- 5 Outlet Power Strip mounted on rear
- Velcro cord management Loop
- 2 Side Aperture Wiring Openings
- Adjustable Shelf
- Milled Detent on Work Surface for small items
- Two deep Drawers
- Soft-touch Drawer Close for secure transport

### Suggested Accessories (see pages 90 & 93)

- 1 Zirc Tub for Shelf (item M1E1 or M1E2)
- 2 Lewis Bins, in Drawers (item M1D1)
- Foot Pedal Holder (2 sizes)

## Rapid Deployment Cart™ (Item R1B1)



### Standard Features

- Fixed Slide Brackets to receive Standard Zirc or other supply tubs
- Two deep Drawers
- Soft-touch Drawer Close for secure transport

### Suggested Accessories (see page 90)

- Standard Zirc Tub (item M1E2)
- 2 Lewis Bins, in drawers (item M1D1)

