

MegaTub™ & UltraTub™ (Items M1B1 & M1C1)

Consolidate up to 10 days worth of your most common procedures materials – *at your fingertips* – with these customizable in-op storage utilities.



Tub Dimensions	Outside	Inside	Height
Top	16.5" x 10.9"	14.8" x 9.2"	2.5"
Bottom	15.5" x 9.9"		

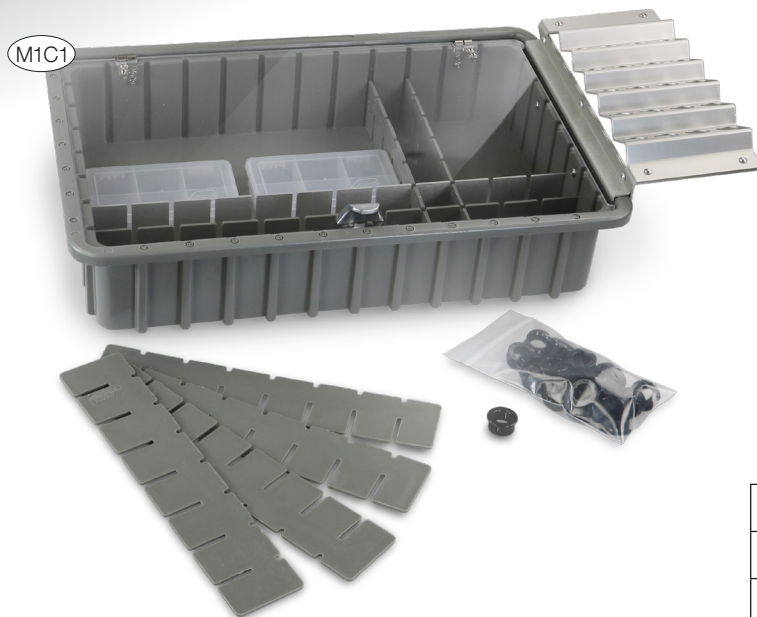
Composite Rack: 4" wide, for an overall Top width of 20.5"

Standard Features - MegaTub

- 2 Long plastic Dividers
- 1 Long aluminum Divider
- 6 Short plastic Dividers
- 5 Utility Compartment Boxes
 - 3 Four-Compartment Boxes
 - 2 Six-Compartment Boxes
- 1 Aluminum Composite Rack
- Composite Rack grommets to be inserted based on your particular needs (two interior hole sizes)
- Clear plastic Lid
- Aluminum wall/shelf Bracket



Clear plastic lid and aluminum wall/shelf bracket included.



Standard Features - UltraTub

- Integrated clear acrylic Lid with Friction Hinges
- 2 Long plastic Dividers
- 1 Long aluminum Divider
- 6 Short plastic Dividers
- 5 Utility Compartment Boxes
 - 3 Four-Compartment Boxes
 - 2 Six-Compartment Boxes
- Composite Rack grommets to be inserted based on your particular needs (two interior hole sizes)
- Aluminum wall/shelf Bracket

Tub Dimensions	Outside	Inside	Height
Top	16.5" x 10.9"	14.8" x 9.2"	3.5"
Bottom	15.5" x 9.9"		

Consumables Bin with Med-Waste (Item M1A2)



Standard Features - Bin

- Aluminum Lid
- 6 Flat Dividers
- 1 Aluminum wall/shelf Bracket
- 1 T-divider
- 1 Multi-divider

Standard Features - Med-Waste

- Aluminum Lid
- Inner removable Cover
- 1 Aluminum wall/shelf Bracket
- 1 Sharps Container

CONFIGURATION

The EP Consumables Bin may be purchased as a standalone unit, or paired with the Med-Waste Bin. In either case, the bin comes with an aluminum shelf/counter bracket of appropriate length.

- Consumables Bin only M1A1
- Consumables Bin & Medwaste M1A2

Dimensions

Dimensions	Outside	Inside	Height
Cons. Bin - Top	7.5" x 16.75"	6" x 15"	6.5"
Cons. Bin - Bottom	5.25" x 14.5"		

Med-Waste Bin: 10" wide, for an overall width of 26.75"

