

# 32" Hygiene InWall™ Workstation (Item D2A1 & D2A4)



Shown with optional scaler, cure light & 2nd HVE

A **compact InWall all-in-one** instrument that provides Hygiene the same **high-level production** capabilities found in all our Workstations.

## Standard Features

- 3-point Swivel for 2-hand/4-hand convertibility
- 1 High-speed Air
- 1 Slow-speed Air
- 1 A/W Syringe
- 1 HVE
- 1 Saliva Ejector
- Parkell Turbo Sensor Scaler
- 1 EP Consumables Bin
- 1 EP Med-Waste Bin
- 8 Milled Handpiece Holders
- 2-Liter Self-contained water supply
- Auxiliary Air/Water Ports
- Bib/Glove/Product storage (D2B)

## CONFIGURATION OPTIONS

Unit may be purchased with or without Upper Cabinet :

- Lower Unit: Workstation..... D2A1
- Upper Unit: Cabinet ..... D2A4

## COLOR CHOICES

### Corian Work Surface:

- Available in standard and premium EP Corian color choices.

### Cabinet Color/Finish Selection:

- Cabinet available in standard EP color choices.
- or - Upgrade to woodgrain finish. (Standard EP selections)

## UPGRADES - see page 15 for details

### Scalers:

- Parkell Turbo Sensor Scaler

### Fiber Optics:

- Fiber Optics Light Source & Power Pack

### Curing Light:

- The Cure TC-01 (Spring Health)
- or - The Cure TC-24A (Spring Health)

### Water Feed:

- Plumbed Line & Bottle

### Additional Handpieces/Utilities:

- 3rd Air-driven Handpiece Hose
  - High-speed (5 or 6 hole)
  - or - Slow-speed (4 hole)
- 2nd Air/Water Syringe
- 1 Dedicated Air Syringe
- 2nd High-volume Suction



## Dimensions & Utilities

**Premium features** and versatile design **maximizes use-of-space** in compact rooms.

### Utility Connections



As an InWall, the 32" Hygiene Workstation does not require an umbilical.

Data-jacks are not typically used.

### Electrical Specifications

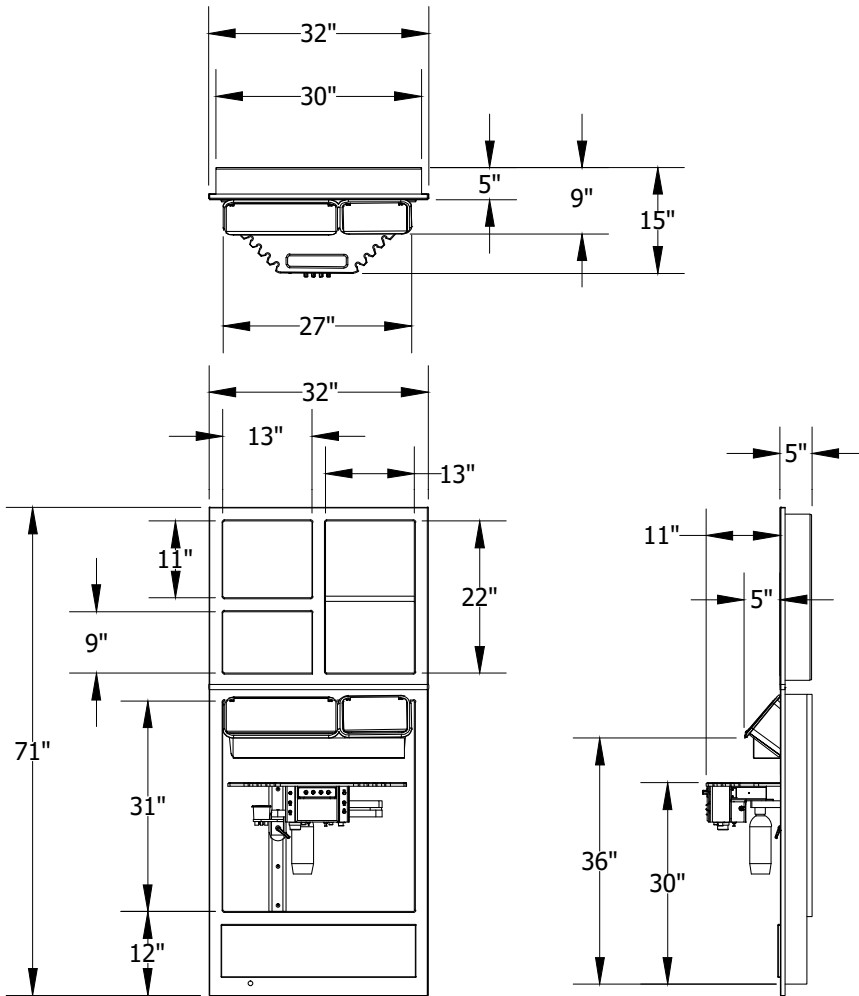
120v AC, 60HZ, 8A

### Air / Vacuum Specifications

Air: 1/4" Dental Style Female QD, 80 psi  
Vacuum: 1/2" Copper or PVC Pipe

### Plumbing Specifications

If using a plumbed dental line feed:  
- 1/2" Cold or Dedicated Dental supply line with straight 1/4 turn-stop and 3/8" compression



## Ideal Room Location

*In most cases, operatories should be designed to accommodate any procedure. However, there are times when space requirements aren't conducive to this.*

*The 32" Hygiene InWall is primarily intended for dedicated solo-operator rooms as narrow as 7' wide. The swivel arm and InWall design of the unit allows for a more compact floor plan while providing exceptional productivity.*

