

Desergo™ *Enhanced Steri Center* (ideal for 7-12 operatories)

The **Desergo *Enhanced Steri Center*** adds **significant functionality** with a **minimal impact** to floorspace.

Enhancements include an additional cabinet for bottle storage or a cassette wrap hanger, optional extra trash pull-out, and the choice of a triple sink for increased efficiency.



COLOR CHOICES

Cabinet Color/Finish Selection:

- ☐ Cabinet available in standard EP color choices.
- ☐ - **OR** - Upgrade to woodgrain finish. (Standard EP selections)

CONFIGURATIONS

Upper Cabinet Shelves

- ☐ Triple Pulldowns on Cassette and Storage Cabinets.
Overall-height is 8'6", as shown on opposite page.
- ☐ Double Pulldowns on Cassette and Storage Cabinets.
Overall-height is 7'6-3/4", and is ideal for offices with lower ceiling heights. (item numbers will be different in this case)

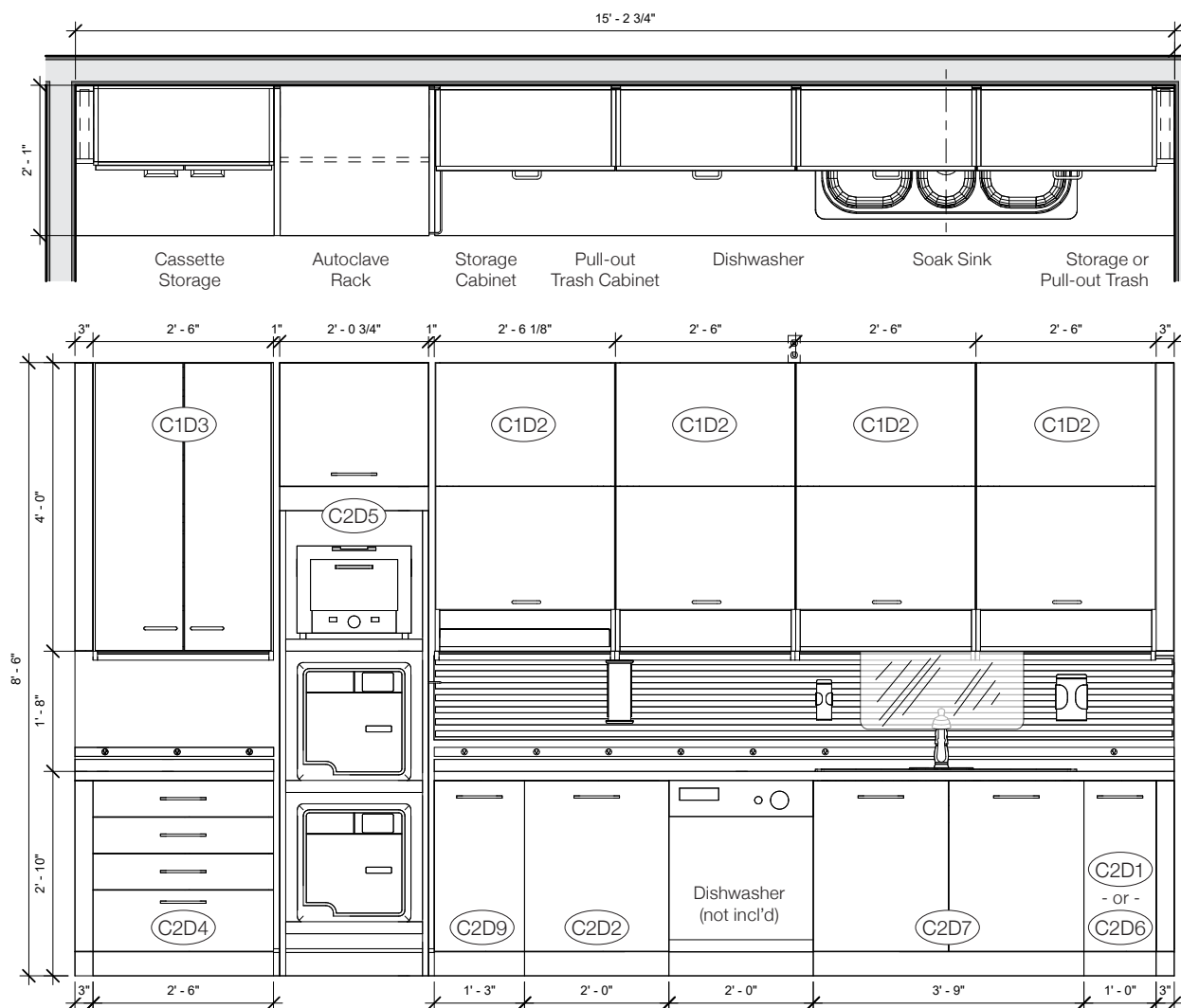
Far Right Cabinet

- ☐ 12" Swing-door Storage Cabinet (C2D1)
- ☐ - or - 10 gal. Pull-out Trash (C2D6)



Triple Pulldowns dramatically **increase storage** space while making access to supplies both **easier and safer**.





Countertops for the **Desergo Steri Center** line can be finished in a variety of materials. **We recommend CORIAN for its durability in a medical environment.** To **reduce your costs**, and **provide the best custom fit possible**, countertops and sinks should be sourced locally. Ask our clinical specialists for details.

INCLUDED COMPONENTS

Upper Cabinetry (left to right)

- 1 30" Clean Cassette Triple Pulldown (C1D3)
- 1 Autoclave Rack (C2D5). Instruments not included.
- 4 30" Sterilization Triple Pulldowns (C1D2)

Base Cabinetry (left to right)

- 30" 4-drawer Cabinet (C2D4)
- 15" Swing-door Storage Cabinet (C2D9)
- 20 gal. pull-out Trash Cabinet (C2D2)
- Space for 24" Dishwasher (washer not included)
- 45" Double swing-door under-sink Storage (C2D7) (sink, drain and faucet not included)
- 12" swing-door Cabinet (C2D1), or 10 gal. pull-out Trash (C2D6)

Middle (left to right)

- Full-length, under-cabinet Lighting
- Over 10' of Slat Wall
- Polycarbonate Splash-guard

Slat Wall Accessories - Choose any 6 items (see page 92 for details):

Single and Triple Glove Box Holders, Sharps Holder, Wipes Holder, Remote Holder, Pad & Pen Holder, Gift Bag Bracket, Printer Shelf, Monitor Bracket

