

Desergo™ Compact Steri Center (suggested for up to 6 operatories)

Sterilization is the **heart** of your Practice. It's the hub around which your system flows – *or doesn't!* Maximize efficiency and productivity by treating this area as an **integrated design element**, not as an afterthought.

Our founder, Dr. David Ahearn, and the team at Design Ergonomics have been studying, improving and lecturing about the importance of a smooth sterilization/resupply system for almost 2 decades. Unfortunately, the industry continues to produce products that don't flow, and don't stand up to the challenges of the dental environment. Out of sheer frustration, we had to build what our clients have been asking for – *and give you what we use in our own practices daily.*



Desergo Steri Center installations provide larger work surfaces, arranged in a **linear flow** with **easy access** to instruments, supplies and storage. **No more bottlenecks!**

Details such as our Pulldown cabinetry, toe-pull trash bins, and Mobile Autoclave Rack increase your team's comfort, speed, and safety.

We build our Steri Centers in the USA to the highest standards of **durability** in **construction** and **materials**.

COLOR CHOICES

Cabinet Color/Finish Selection:

- ☐ Cabinet available in standard EP color choices.
- ☐ - **OR** - Upgrade to woodgrain finish. (Standard EP selections)

CONFIGURATIONS

Upper Cabinet Shelves

- ☐ Triple Pulldowns on Cassette and Storage Cabinets.
Overall-height is 8'6", as shown on opposite page.
- ☐ Double Pulldowns on Cassette and Storage Cabinets.
Overall-height is 7'6-3/4", and is ideal for offices with lower ceiling heights. (item numbers will be different in this case)

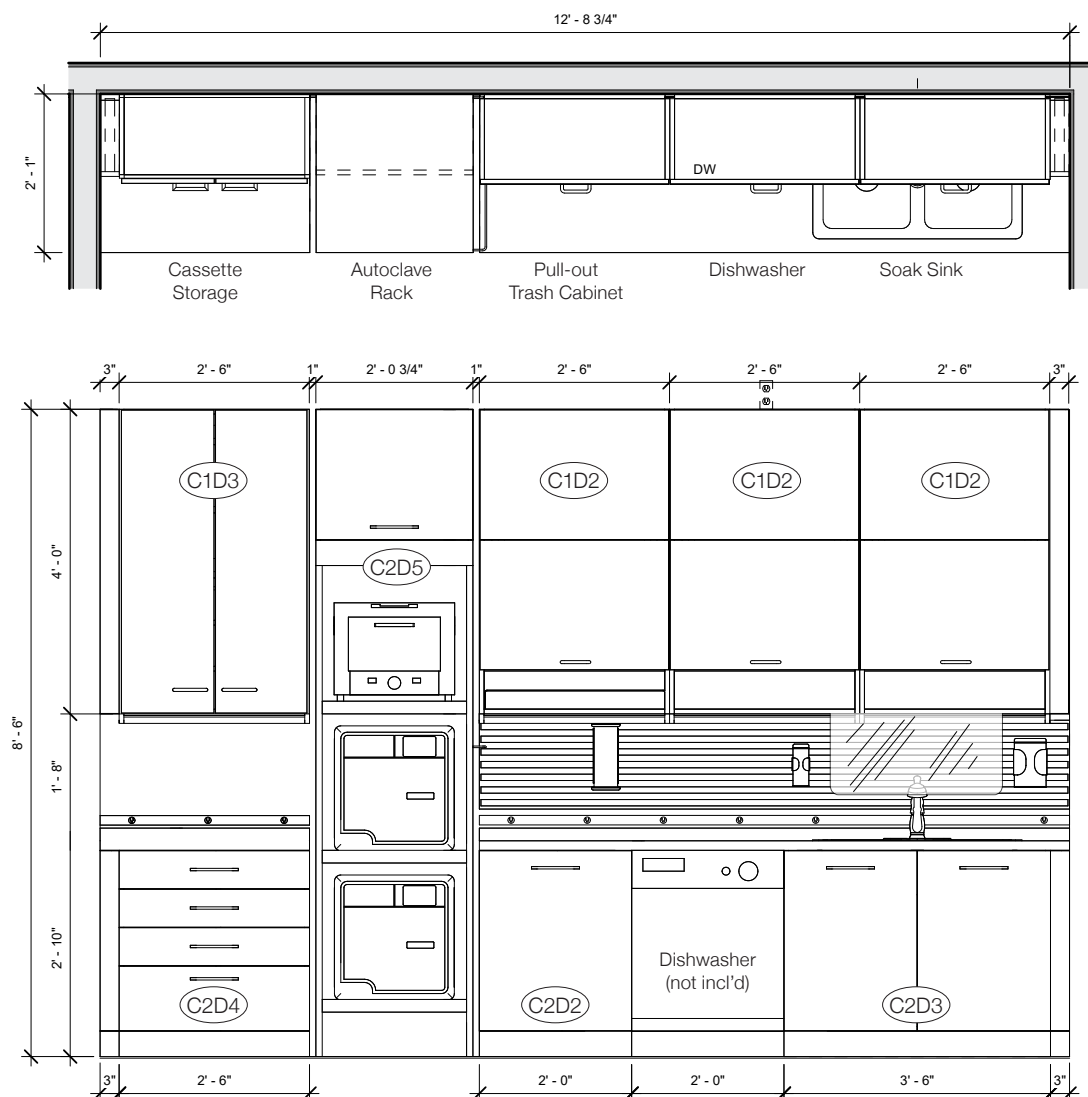


Finally, a solution to cabinet delamination, staining and peeling – a **chrome, stainless and aluminum, self-contained rack system** with marine-grade **Starboard** shelving.

This rack will **outlast** anything else on the market.

Our Autoclave Rack also includes **wheels** to allow easier access for cleaning.





Countertops for the **Desergo Steri Center** line can be finished in a variety of materials. **We recommend CORIAN for its durability in a medical environment.** To **reduce your costs**, and **provide the best custom fit possible**, countertops and sinks should be sourced locally. Ask our clinical specialists for details.

INCLUDED COMPONENTS

Upper Cabinetry (left to right)

- 1 30" Clean Cassette Triple Pulldown (C1D3)
- 1 Autoclave Rack (C2D5). Instruments not included.
- 3 30" Sterilization Triple Pulldowns (C1D2)

Base Cabinetry (left to right)

- 30" 4-drawer Cabinet (C2D4)
- 20 gal. pull-out Trash Cabinet (C2D2)
- Space for 24" Dishwasher (washer not included)
- 42" Double swing-door under-sink Storage (C2D3) (sink, drain and faucet not included)

Middle (left to right)

- Full-length, under-cabinet lighting
- Over 7-1/2' of Slat Wall
- Polycarbonate Splash-guard

Slat Wall Accessories - Choose any 4 items (see page 92 for details):

Single and Triple Glove Box Holders, Sharps Holder, Wipes Holder, Remote Holder, Pad & Pen Holder, Gift Bag Bracket, Printer Shelf, Monitor Bracket

