

# MegaTub™ & UltraTub™ (Items M1B1 & M1C1)

**Consolidate** up to 10 days worth of your most common procedures materials – *at your fingertips* – with these customizable in-op storage utilities.



Tub Dimensions	Outside	Inside	Height
Top	16.5" x 10.9"	14.8" x 9.2"	2.5"
Bottom	15.5" x 9.9"		

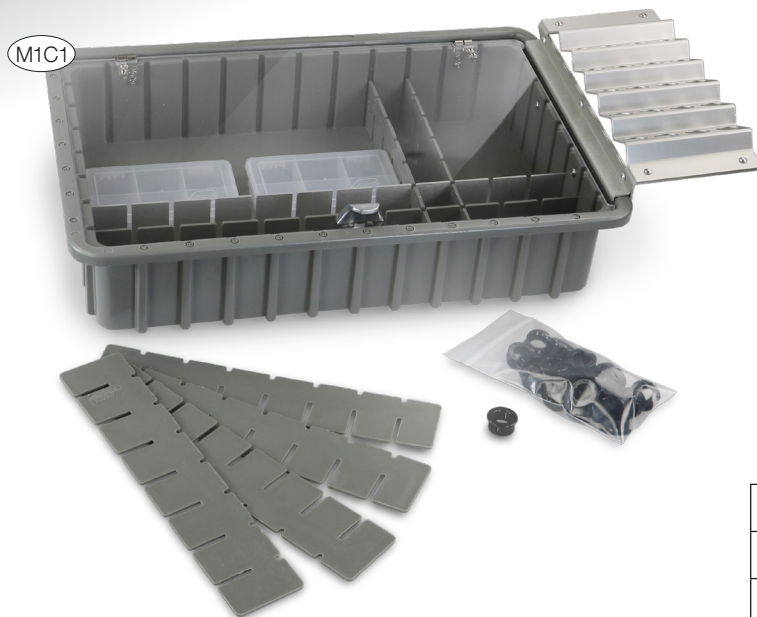
Composite Rack: 4" wide, for an overall Top width of 20.5"

## Standard Features - MegaTub

- 2 Long plastic Dividers
- 1 Long aluminum Divider
- 6 Short plastic Dividers
- 5 Utility Compartment Boxes
  - 3 Four-Compartment Boxes
  - 2 Six-Compartment Boxes
- 1 Aluminum Composite Rack
- Composite Rack grommets to be inserted based on your particular needs (two interior hole sizes)
- Clear plastic Lid
- Aluminum wall/shelf Bracket



Clear plastic lid and aluminum wall/shelf bracket included.



## Standard Features - UltraTub

- Integrated clear acrylic Lid with Friction Hinges
- 2 Long plastic Dividers
- 1 Long aluminum Divider
- 6 Short plastic Dividers
- 5 Utility Compartment Boxes
  - 3 Four-Compartment Boxes
  - 2 Six-Compartment Boxes
- Composite Rack grommets to be inserted based on your particular needs (two interior hole sizes)
- Aluminum wall/shelf Bracket

Tub Dimensions	Outside	Inside	Height
Top	16.5" x 10.9"	14.8" x 9.2"	3.5"
Bottom	15.5" x 9.9"		

# Consumables Bin with Med-Waste (Item M1A2)



## Standard Features - Bin

- Aluminum Lid
- 6 Flat Dividers
- 1 Aluminum wall/shelf Bracket
- 1 T-divider
- 1 Multi-divider

## Standard Features - Med-Waste

- Aluminum Lid
- Inner removable Cover
- 1 Aluminum wall/shelf Bracket
- 1 Sharps Container

## CONFIGURATION

The EP Consumables Bin may be purchased as a standalone unit, or paired with the Med-Waste Bin. In either case, the bin comes with an aluminum shelf/counter bracket of appropriate length.

- Consumables Bin only ..... M1A1
- Consumables Bin & Medwaste ..... M1A2

## Dimensions

Dimensions	Outside	Inside	Height
Cons. Bin - Top	7.5" x 16.75"	6" x 15"	6.5"
Cons. Bin - Bottom	5.25" x 14.5"		

Med-Waste Bin: 10" wide, for an overall width of 26.75"



# Additional Storage Tubs

Be ready in an instant for your less common procedures. From implants to whitening, you'll have **immediate, organized access** to everything you need for treatments that fall outside your typical 90% procedure profile.

## Zirc Tub Complete (item M1E1)



Featuring a locking lid and smaller size, the Zirc Tub Complete is an excellent storage device for many specialty procedures.

### Standard Features

- Clear, locking Lid
- Customizable Divider Inserts
- Removable interior foam Base
- Removable upper Tray
- 2 small individual Containers

Dimensions: 12-1/4" x 10-7/8" x 2-1/2" (4" with lid)

## Zirc Tub Standard (item M1E2)



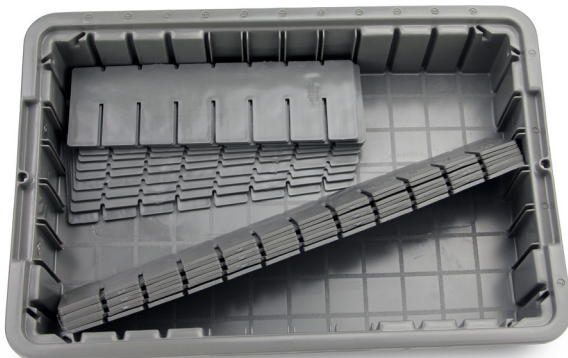
The Standard Zirc Tub, sold without a lid, is perfectly designed to slide into the fixed brackets on the Rapid Deployment Cart (item R1B, page 67).

### Standard Features

- Customizable Divider Inserts
- Removable interior foam Base

Dimensions: 12-1/4" x 10-7/8" x 2-1/2"

## Lewis Storage Bin (item M1D1)



The Lewis bin fits comfortably in any of our RapidCart drawers. Its large capacity and customizable dividers, make it an effective enhancement.

### Standard Features

- Customizable Divider Inserts
- High-durability construction

Dimensions: 10-7/8" x 16-1/2" x 3-1/4"

# Clear Faced Tilt Bins

The ideal way to **maintain control** of your small item inventory. Know what you have, where it is, and when it's time to re-order – **all at a glance.**

## Standard Features - Tilt Bins

- Clear-face, break resistant plastic
- 45° Tilt-out with molded handle
- Ridged for easy counter stacking
- Pre-drilled for wall mounting



**9-Bin Unit (item M1F1)**

Width	Depth	Height
23-5/8"	2-1/2"	3"



**6-Bin Unit (item M1F2)**

Width	Depth	Height
23-5/8"	3-5/8"	4-1/2"



**5-Bin Unit (item M1F3)**

Width	Depth	Height
23-5/8"	5-1/4"	6-1/2"