

32" InWall™ Media (Item N3C1)



Monitor not included

Increase the **capabilities** of your operatories... not their square footage.

Standard Features

- Articulating Media Arm w/ Monitor Bracket
- Extended Corian Countertop
- Recessed Paper Towel and Cup Dispenser behind large, hinged Mirror
- Additional Product Storage behind Mirror
- Open Glove & Bib Storage
- Chrome Faucet
- Brushed stainless Sink
- CPU Compartment
- Utility Access Panel

Optional Features/Configurations

- Available with Sink oriented to the left or right (or without Sink)
- Under-counter Keyboard Swivel (shown)
- USB Panel

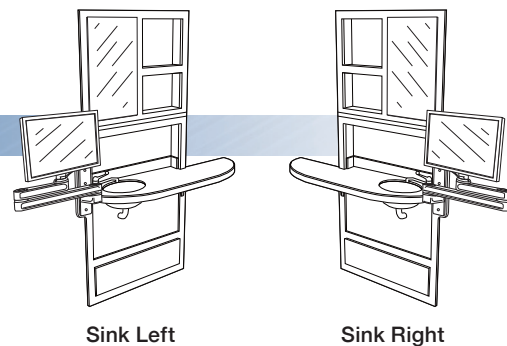
OPTIONAL FEATURES

- Under-counter Keyboard Swivel
- USB Panel

CONFIGURATION

Base Product Orientation:

- Sink oriented left, counter extending right
- or - Sink oriented right, counter extending left.
- No Sink (you will still need to indicate orientation of counter)



COLOR CHOICES

Corian Surface:

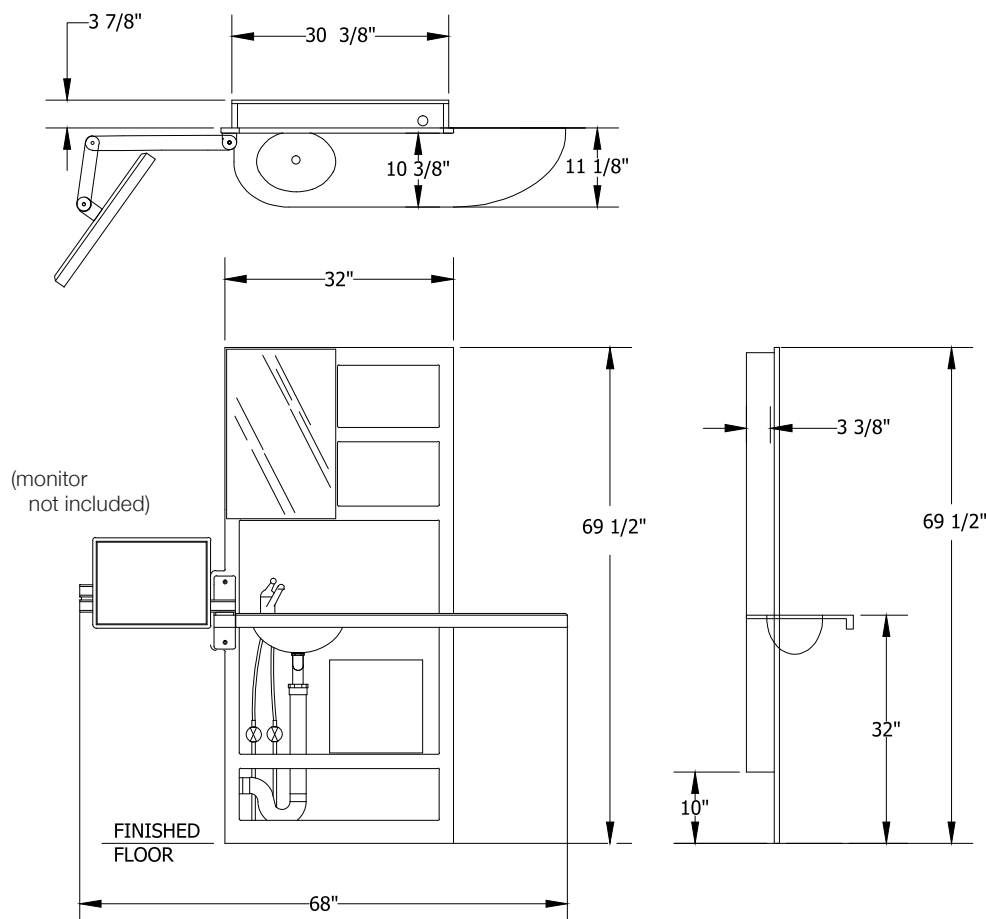
- Available in standard and premium EP Corian color choices.

Cabinet Color Selections:

- Face Frame and interiors available in standard color choices.
- or - Upgrade to woodgrain finish interiors with matching Face Frame paint. (Standard EP woodgrain finishes)



Dimensions & Utilities



Electrical Specifications

120v Duplex Outlet
(computer and monitor)
Cat 5 (or better) Data Jack

Plumbing Specifications

Unit is supplied with Delta 570
Single Lever Faucet and
1-1/4" 90° Tail-piece.

Plumber to provide:

- 1/2" Hot & Cold domestic supply lines with straight 1/4 turn-stop and 3/8" compression
- 1-1/2" DWV with P-Trap as shown

Ideal Room Location

Left Sink with right Counter extension, ideally for right handed doctor rooms.

To maximize monitor arm geometry, the 32" Comfort Media should be placed roughly 5' 6" from the headwall (as shown). Dimensional tolerance of 6" will allow maximum effect for patient presentation and treatment planning.

For alternate room layouts or equipment configurations, position unit so that right side of cabinet lines up with head of chair when reclined.

