



ergonomic products™

Performance Without Compromise®

Productivity **Solutions**

Desergo™ *Steri Centers*



Sterilization cabinetry designed for **high-flow** practices of all sizes.

220718

www.ergonomic-products.com

Sterilization is the **heart** of your Practice. It's the hub around which your system flows - *or doesn't!* Maximize efficiency & productivity by treating this area as an **integrated design element**, not an afterthought.

Our founder, Dr. David Ahearn, and the team at Design Ergonomics have been studying, improving and lecturing about the importance of a smooth sterilization/resupply system for almost 2 decades. Unfortunately the industry continues to produce products that don't flow, and don't stand up to the challenges of the dental environment. Out of sheer frustration, we had to build what our clients have been asking for – and give you what we use in our own practices daily.



Desergo Steri Center installations provide larger work surfaces, arranged in a **linear flow** with **easy access** to instruments, supplies and storage. **No more bottlenecks!**

Details such as our Pulldown cabinetry, toe-pull trash bins and Mobile Autoclave Rack increase your team's comfort, speed, and safety.

We build our Steri Centers in the USA to the highest standards of **durability** in **construction** and **materials**.

COLOR CHOICES

Cabinet Color/Finish Selection:

- Cabinet available in standard EP color choices.
- **OR** - Upgrade to woodgrain finish. (Standard EP selections)

CONFIGURATIONS

Upper Cabinet Shelves

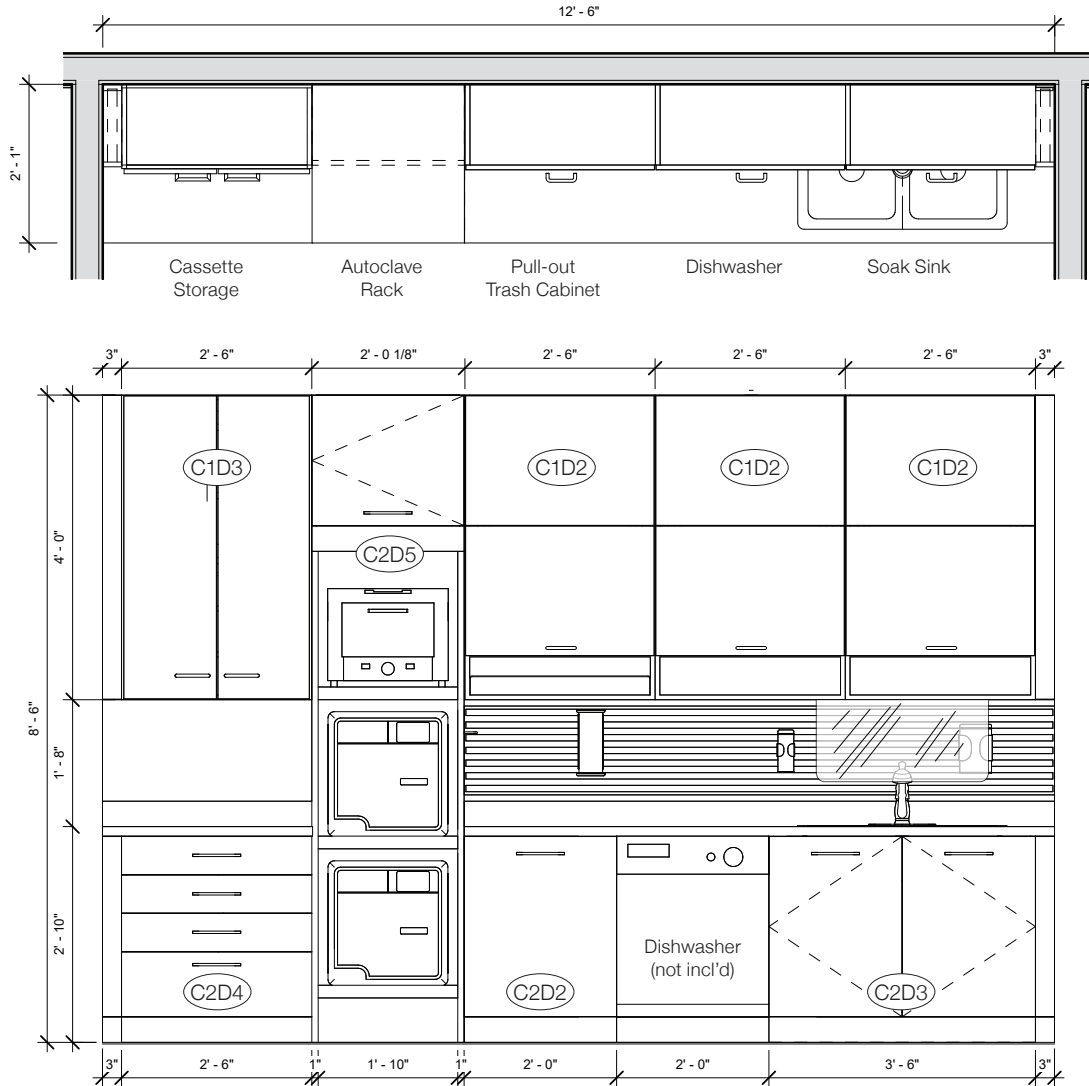
- Triple Pulldowns on Cassette and Storage Cabinets. Overall-height is 8'6", as shown on opposite page.
- Double Pulldowns on Cassette and Storage Cabinets. Overall-height is 7'6-3/4", and is ideal for offices with lower ceiling heights. (item numbers will be different in this case)



Finally, a solution to cabinet delamination, staining and peeling – a **chrome, stainless and aluminum, self-contained rack system** with marine-grade **Starboard** shelving.

This rack will **outlast** anything else on the market.

Our Autoclave Rack also includes **wheels** to allow easier access for cleaning.



Counter-tops for the **Desergo Steri Center** line can be finished in a variety of materials. **We recommend CORIAN for its durability in a medical environment.** To **reduce your costs**, and **provide the best custom fit possible**, counter-tops should be sourced locally. Ask our clinical specialists for details.

INCLUDED COMPONENTS

Upper Cabinetry (left to right)

- 1 Clean Cassette Triple Pulldown (C1D3)
- 1 Autoclave Rack (C2D5). Instruments not included.
- 3 Sterilization Triple Pulldowns (C1D2)

Base Cabinetry (left to right)

- 30" 4-drawer Cabinet (C2D4)
- 20 gal. Pull-out Trash (C2D2)
- Space for 24" Dishwasher (washer not included)
- Double Swing-door Under-sink Storage (C2D3)

Middle (left to right)

- Full-length, under-cabinet lighting
- Over 7-1/2' of Slat Wall
- Double Undermount Sink & Faucet
- Polycarbonate Splash-guard

Slat Wall Accessories - Choose any 4 items (see Catalog for details):

Glove Box holder, Sharps holder, Wipes holder, Remote holder, Pad & Pen holder, Gift Bag bracket, Printer shelf, Monitor bracket

The **Desergo Enhanced Steri Center** adds **significant functionality** with a **minimal impact** to **floor space**.

Enhancements include an additional cabinet for bottle storage or a cassette wrap hanger, optional extra trash pull-out, and the choice of a triple sink for increased efficiency.



COLOR CHOICES

Cabinet Color/Finish Selection:

- Cabinet available in standard EP color choices.
- **OR** - Upgrade to woodgrain finish. (Standard EP selections)

CONFIGURATIONS

Upper Cabinet Shelves

- Triple Pulldowns on Cassette and Storage Cabinets.
Overall-height is 8'6", as shown on opposite page.
- Double Pulldowns on Cassette and Storage Cabinets.
Overall-height is 7'6-3/4", and is ideal for offices with lower ceiling heights. (items numbers will be different in this case)

Undermount Sink

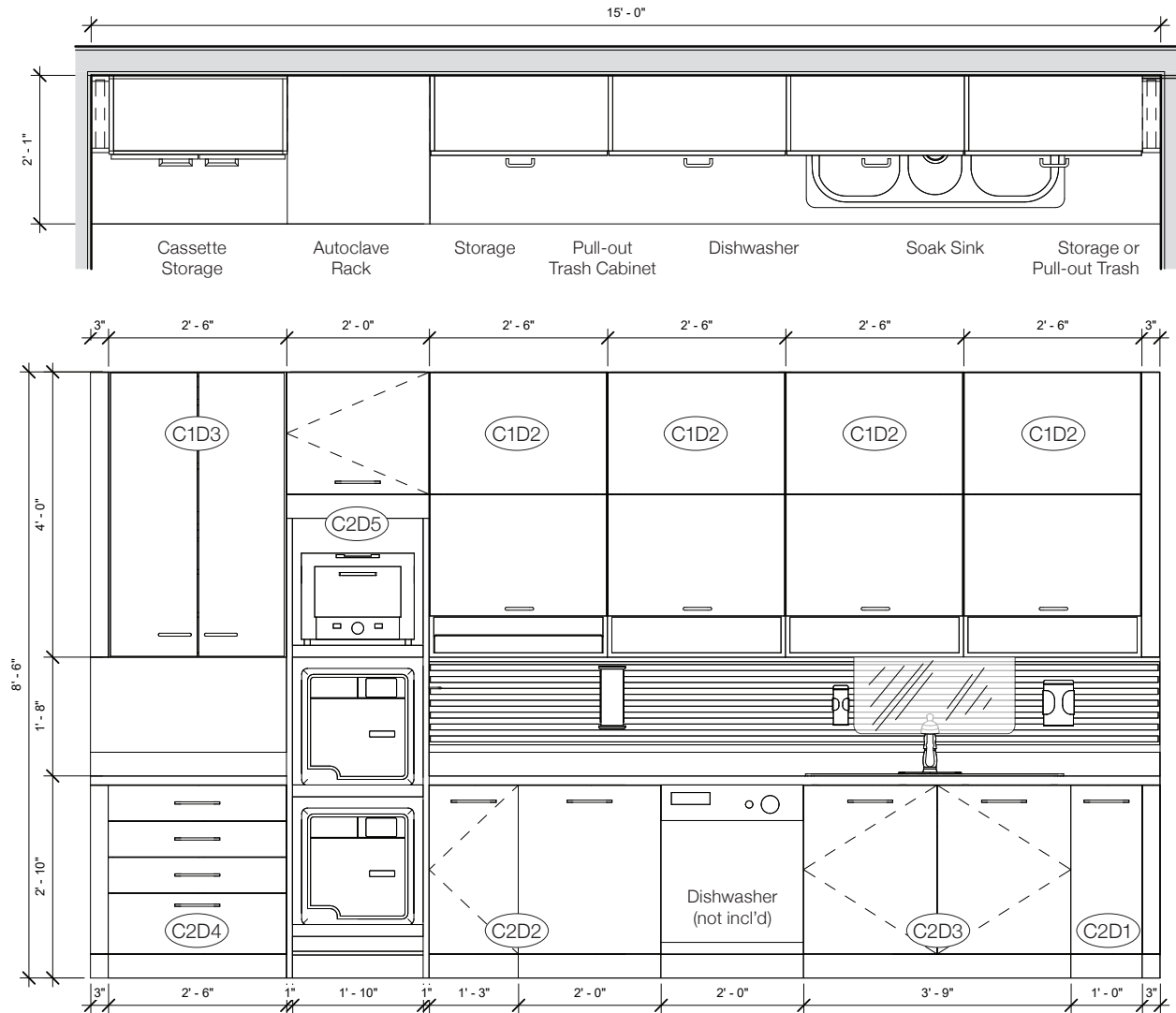
- Double Sink
- **OR** - Triple Sink

Far Right Cabinet (C2D1)

- Swing-door Storage
- **OR** - Pull-out Trash (10 gal.)



Triple Pulldowns dramatically **increase storage** space while making access to supplies both **easier and safer**.



Counter-tops for the **Desergo Steri Center** line can be finished in a variety of materials. **We recommend CORIAN for its durability in a medical environment.** To **reduce your costs**, and **provide the best custom fit possible**, counter-tops should be sourced locally. Ask our clinical specialists for details.

INCLUDED COMPONENTS

Upper Cabinetry (left to right)

- 1 Clean Cassette Triple Pulldown (C1D3)
- 1 Autoclave Rack (C2D5). Instruments not included.
- 4 Sterilization Triple Pulldowns (C1D2)

Base Cabinetry (left to right)

- 30" 4-drawer Cabinet (C2D4)
- Swing-door Cabinet (left) & 20 gal. Pull-out Trash (C2D2)
- Space for 24" Dishwasher (washer not included)
- Double Swing-door Under-sink Storage (C2D3)
- 12" Swing-door Cabinet - or - 10 gal. Pull-out Trash (C2D1)

Middle (left to right)

- Full-length, under-cabinet lighting
- Over 10' of Slat Wall
- Double or Triple Under-mount Sink & Faucet
- Polycarbonate Splash-guard

Slat Wall Accessories - Choose any 6 items (see Catalog for details):

Glove Box holder, Sharps holder, Wipes holder, Remote holder, Pad & Pen holder, Gift Bag bracket, Printer shelf, Monitor bracket

When you need high-flow *at the highest volume* the **Desergo Elite Steri Center** is the answer. **Go big or go home.**

With double the autoclave and instrument washing capabilities, 30 gallons (or more) of trash management, and twice the clean storage capacity, the Elite will provide ample through-put for the busiest of dental practices.



COLOR CHOICES

Cabinet Color/Finish Selection:

- Cabinet available in standard EP color choices.
- **OR** - Upgrade to woodgrain finish. (Standard EP selections)

CONFIGURATIONS

Upper Cabinet Shelves

- Triple Pulldowns on Cassette and Storage Cabinets. Overall-height: 8'6"
- Double Pulldowns on Cassette and Storage Cabinets.
Overall-height is 7'6-3/4", and is ideal for offices with lower ceiling heights. (Item numbers will be different in this case.)

Autoclave Rack

- 2 racks as shown
- **OR** - Single, 36" wide rack for larger autoclave (ie: Tuttnauer MDMaxx)

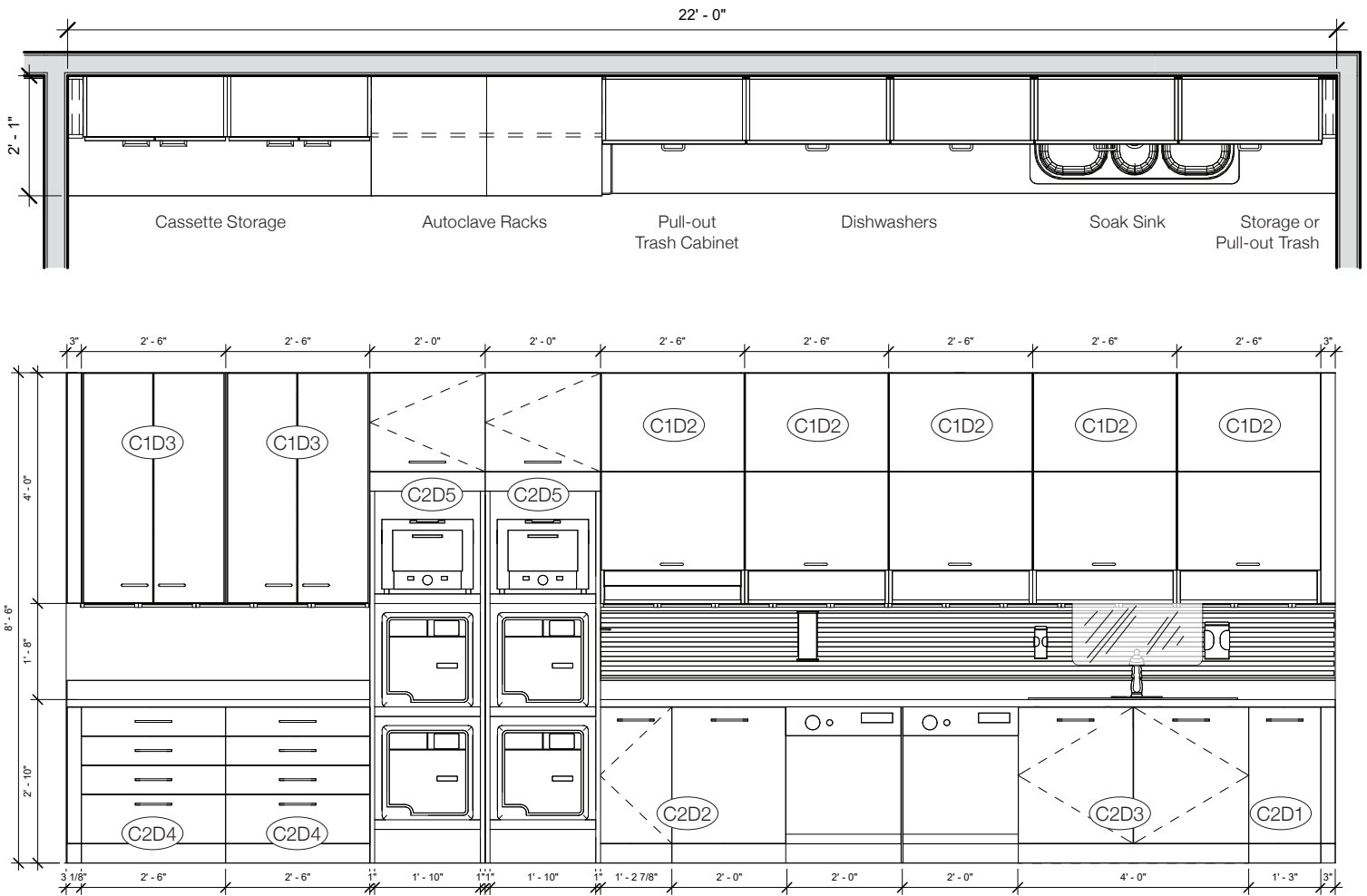
Undermount Sink

- Double Sink
- **OR** - Triple Sink

Far Right Cabinet (C2D1)

- Swing-door Storage
- **OR** - Pull-out Trash (15 gal.)





Counter-tops for the **Desergo Steri Center** line can be finished in a variety of materials. **We recommend CORIAN** for its durability in a medical environment. To **reduce your costs**, and **provide the best custom fit possible**, counter-tops should be sourced locally. Ask our clinical specialists for details.

INCLUDED COMPONENTS

Upper Cabinetry (left to right)

- 2 Clean Cassette Triple Pulldowns (C1D3)
- 2 Autoclave Racks (C2D5). Instruments not included.
- 5 Sterilization Triple Pulldowns (C1D2)

Base Cabinetry (left to right)

- 30" 4-drawer Cabinet (C2D4)
- 30 gal. Pull-out Trash (C2D2)
- Space for two 24" Dishwashers (washers not included)
- Double Swing-door Under-sink Storage (C2D3)
- 18" Swing-door Cabinet - or - 15 gal. Pull-out Trash (C2D1)

Middle (left to right)

- Full-length, under-cabinet lighting
- Over 12-1/2' of Slat Wall
- Double or Triple Undermount Sink & Faucet
- Polycarbonate Splash-guard

Slat Wall Accessories - Choose any 8 items (see Catalog for details):

Glove Box holder, Sharps holder, Wipes holder, Remote holder, Pad & Pen holder, Gift Bag bracket, Printer shelf, Monitor bracket